

Datasheet for ABIN238597

**anti-ASRGL1 antibody (Internal Region)****2** Images[Go to Product page](#)

## Overview

Quantity:	100 µg
Target:	ASRGL1
Binding Specificity:	Internal Region
Reactivity:	Human
Host:	Goat
Clonality:	Polyclonal
Conjugate:	This ASRGL1 antibody is un-conjugated
Application:	Western Blotting (WB), ELISA

## Product Details

Purpose:	ASRGL1 / ALP
Immunogen:	Peptide with sequence EKHEKGAQKTDCQ, from the internal region of the protein sequence according to NP_001077395.1, NP_079356.3.
Sequence:	EKHEKGAQKT DCQ
Isotype:	IgG
Specificity:	Both reported variants represent identical protein (NP_001077395.1 and NP_079356.3).
Cross-Reactivity:	Human
Purification:	Purified from goat serum by ammonium sulphate precipitation followed by antigen affinity chromatography using the immunizing peptide.
Grade:	Verified

## Target Details

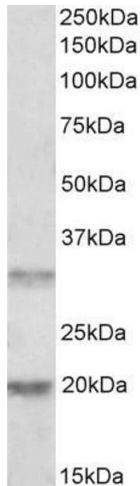
Target:	ASRGL1
Alternative Name:	ASRGL1 ( <a href="#">ASRGL1 Products</a> )
Background:	ASRGL1, ALP, asparaginase like 1, ALP1, FLJ22316, asparaginase-like 1 protein
Gene ID:	80150
NCBI Accession:	<a href="#">NP_001077395</a> , <a href="#">NP_079356</a>

## Application Details

Application Notes:	Western Blot: Approx 34 kDa band observed in Human Tosil and lysteof cell line Hela lysates (calculated MW of 32.1 kDa according to NP_001077395.1). Recommended concentration: 1-3 µg/mL. An additional band of unknown identity was also consistently observed Peptide ELISA: antibody detection limit dilution 1:32000.
Restrictions:	For Research Use only

## Handling

Format:	Liquid
Concentration:	0.5 mg/mL
Buffer:	Supplied at 0.5 mg/mL in Tris saline, 0.02 % sodium azide, pH 7.3 with 0.5 % bovine serum albumin.
Preservative:	Sodium azide
Precaution of Use:	This product contains Sodium azide: a POISONOUS AND HAZARDOUS SUBSTANCE which should be handled by trained staff only.
Handling Advice:	Minimize freezing and thawing.
Storage:	-20 °C
Storage Comment:	Aliquot and store at -20°C, with minimal freeze/thawing. A working aliquot may be refrigerated at 4°C for a few weeks and still remain viable.



Western Blotting

**Image 1.** ABIN238597 (0.5µg/ml) staining of Human Tonsil lysate (35µg protein in RIPA buffer). Primary incubation was 1 hour. Detected by chemiluminescence.



Western Blotting

**Image 2.** ABIN238597 (1.5µg/ml) staining of Human Testis lysate (35µg protein in RIPA buffer). Primary incubation was 1 hour. Detected by chemiluminescence.