



[Go to Product page](#)

Datasheet for ABIN238605

anti-LASP1 antibody (Internal Region)

3 Images

Overview

Quantity:	100 µg
Target:	LASP1
Binding Specificity:	Internal Region
Reactivity:	Human
Host:	Goat
Clonality:	Polyclonal
Conjugate:	This LASP1 antibody is un-conjugated
Application:	Western Blotting (WB), ELISA, Immunohistochemistry (IHC)

Product Details

Purpose:	LASP1 (internal region)
Immunogen:	Peptide with sequence C-PERRDSQDGSSYR, from the internal region of the protein sequence according to NP_006139.1.
Sequence:	PERRDSQDGS SYR
Isotype:	IgG
Cross-Reactivity:	Dog, Human
Purification:	Purified from goat serum by ammonium sulphate precipitation followed by antigen affinity chromatography using the immunizing peptide.
Grade:	Verified

Target Details

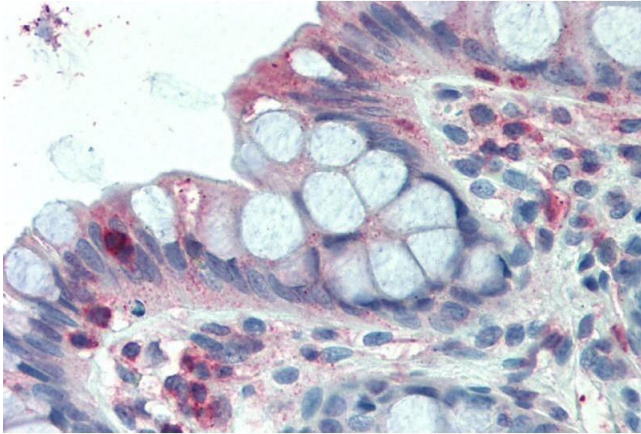
Target:	LASP1
Alternative Name:	LASP1 (LASP1 Products)
Background:	LASP1, LIM and SH3 protein 1, Lasp-1, MLN50
Gene ID:	3927
NCBI Accession:	NP_006139

Application Details

Application Notes:	Immunohistochemistry: Paraffin embedded Human Colon and Small Intestine. Recommended concentration: 2.5 µg/mL. Western Blot: Approx 36 kDa band observed in Human Kidney lysates (calculated MW of 29.7 kDa according to NP_006139.1). The observed molecular weight corresponds to earlier findings in literature with different antibodies (Schreiber et al, Gene. 1998 Jan Peptide ELISA: antibody detection limit dilution 1:32000.
Restrictions:	For Research Use only

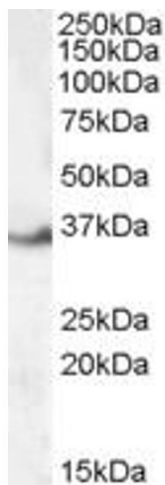
Handling

Format:	Liquid
Concentration:	0.5 mg/mL
Buffer:	Supplied at 0.5 mg/mL in Tris saline, 0.02 % sodium azide, pH 7.3 with 0.5 % bovine serum albumin.
Preservative:	Sodium azide
Precaution of Use:	This product contains Sodium azide: a POISONOUS AND HAZARDOUS SUBSTANCE which should be handled by trained staff only.
Handling Advice:	Minimize freezing and thawing.
Storage:	-20 °C
Storage Comment:	Aliquot and store at -20°C, with minimal freeze/thawing. A working aliquot may be refrigerated at 4°C for a few weeks and still remain viable.



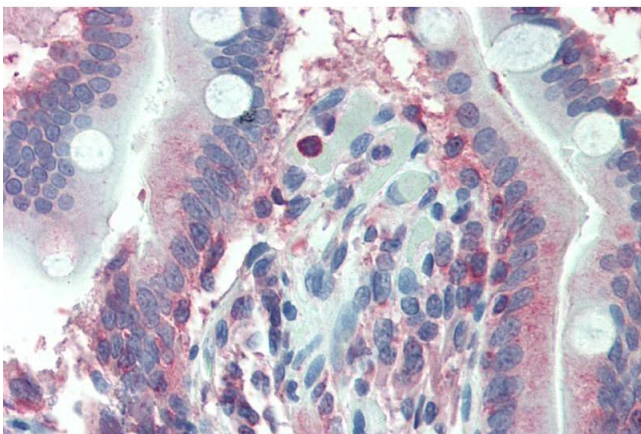
Immunohistochemistry

Image 1. ABIN238605 (2.5µg/ml) staining of paraffin embedded Human Colon. Steamed antigen retrieval with citrate buffer pH 6, AP-staining.



Western Blotting

Image 2. ABIN238605 (0.1µg/ml) staining of Human Kidney lysate (35µg protein in RIPA buffer). Primary incubation was 1 hour. Detected by chemiluminescence.



Immunohistochemistry

Image 3. ABIN238605 (2.5µg/ml) staining of paraffin embedded Human Small Intestine. Steamed antigen retrieval with citrate buffer pH 6, AP-staining.