

Datasheet for ABIN238608
anti-PRRX1 antibody (Internal Region)[Go to Product page](#)

5 Images

Overview

Quantity:	100 µg
Target:	PRRX1
Binding Specificity:	Internal Region
Reactivity:	Human, Mouse
Host:	Goat
Clonality:	Polyclonal
Conjugate:	This PRRX1 antibody is un-conjugated
Application:	Western Blotting (WB), ELISA

Product Details

Purpose:	PRRX1
Immunogen:	Peptide with sequence C-GSDTPQQDNDQ, from the internal region of the protein sequence according to NP_008833.1, NP_073207.1.
Sequence:	GSDTPQQDND Q
Isotype:	IgG
Specificity:	This antibody is expected to recognise both reported isoforms (NP_008833.1, NP_073207.1).
Cross-Reactivity:	Cow, Human, Mouse
Purification:	Purified from goat serum by ammonium sulphate precipitation followed by antigen affinity chromatography using the immunizing peptide.
Grade:	Verified

Target Details

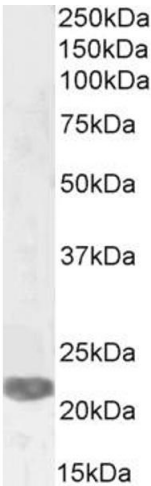
Target:	PRRX1
Alternative Name:	PRRX1 (PRRX1 Products)
Background:	PRRX1, paired related homeobox 1, PHOX1, PMX1, PRX1, homeobox protein PHOX1, paired mesoderm homeo box 1, paired mesoderm homeobox 1
Gene ID:	5396, 18933
NCBI Accession:	NP_008833 , NP_073207

Application Details

Application Notes:	Western Blot: Approx 28 kDa band observed in Mouse Heart lysates, and approx. 22-23 kDa in lysates of cell line LNCaP (calculated MW of 24.4 kDa according to Human NP_008833.1) and 27.3 kDa according to Mouse NP_035257.1 (.Recommended concentration: 1-2 µg/mL Peptide ELISA: antibody detection limit dilution 1:2000.
Restrictions:	For Research Use only

Handling

Format:	Liquid
Concentration:	0.5 mg/mL
Buffer:	Supplied at 0.5 mg/mL in Tris saline, 0.02 % sodium azide, pH 7.3 with 0.5 % bovine serum albumin.
Preservative:	Sodium azide
Precaution of Use:	This product contains Sodium azide: a POISONOUS AND HAZARDOUS SUBSTANCE which should be handled by trained staff only.
Handling Advice:	Minimize freezing and thawing.
Storage:	-20 °C
Storage Comment:	Aliquot and store at -20°C, with minimal freeze/thawing. A working aliquot may be refrigerated at 4°C for a few weeks and still remain viable.



Western Blotting

Image 1. (ABIN238608) (2 µg/mL) staining of LNCaP cell lysate (35 µg protein in RIPA buffer). Detected by chemiluminescence.



Image 2. ABIN238608 (1 µg/mL) staining of Human Heart lysate (35 µg protein in RIPA buffer). Primary incubation was 1 hour. Detected by chemiluminescence.



Western Blotting

Image 3. ABIN238608 (0.3 µg/mL) staining of Human Muscle lysate (35 µg protein in RIPA buffer). Detected by chemiluminescence.

Please check the [product details page](#) for more images. Overall 5 images are available for ABIN238608.