



[Go to Product page](#)

Datasheet for ABIN238610
anti-WISP1 antibody (C-Term)

7 Images

Overview

Quantity:	100 µg
Target:	WISP1
Binding Specificity:	C-Term
Reactivity:	Human
Host:	Goat
Clonality:	Polyclonal
Conjugate:	This WISP1 antibody is un-conjugated
Application:	Western Blotting (WB), ELISA, Immunofluorescence (IF), Flow Cytometry (FACS)

Product Details

Purpose:	WISP1
Immunogen:	Peptide with sequence C-ESYPDFSEIAN, from the C Terminus of the protein sequence according to NP_003873.1, NP_543028.1.
Sequence:	ESYPDFSEIA N
Isotype:	IgG
Specificity:	This antibody is expected to recognize both reported isoforms (NP_003873.1, NP_543028.1).
Cross-Reactivity:	Human, Mouse, Rat
Purification:	Purified from goat serum by ammonium sulphate precipitation followed by antigen affinity chromatography using the immunizing peptide.
Grade:	Verified

Target Details

Target:	WISP1
Alternative Name:	CCN4 (WISP1 Products)
Background:	WISP1, WNT1 inducible signaling pathway protein 1, CCN4, WISP1c, WISP1i, WISP1tc, WNT1 induced secreted protein 1, Wnt-1 inducible signaling pathway protein 1, wnt-1 signaling pathway protein 1
Gene ID:	8840, 22402, 65154
NCBI Accession:	NP_003873 , NP_543028
Pathways:	WNT Signaling , Growth Factor Binding

Application Details

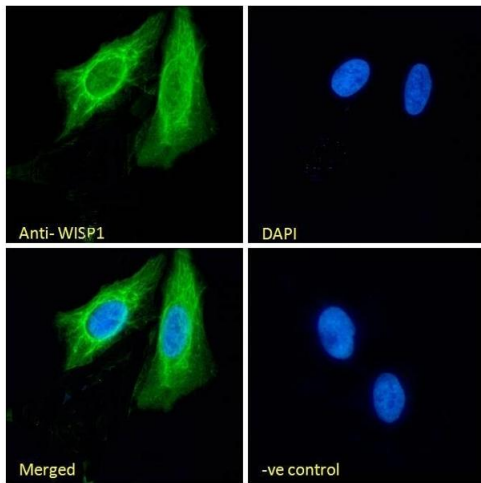
Application Notes:	Western Blot: Approx 32-35 kDa band observed in lysates of cell line CaCo-2 and approx. 40 kDa in Human Tonsil lysates, and additionally in a lysate of cell line CaCo-2, which were successfully blocked by incubation with the immunising peptide (calculated Peptide ELISA: antibody detection limit dilution 1:128000).
Comment:	Immunofluorescence: Strong expression of the protein seen in the cytoplasm of A431 and U2OS cells. Recommended concentration: 10µg/ml. Flow Cytometry: Flow cytometric analysis of A431 cells. Recommended concentration:
Restrictions:	For Research Use only

Handling

Format:	Liquid
Concentration:	0.5 mg/mL
Buffer:	Supplied at 0.5 mg/mL in Tris saline, 0.02 % sodium azide, pH 7.3 with 0.5 % bovine serum albumin.
Preservative:	Sodium azide
Precaution of Use:	This product contains Sodium azide: a POISONOUS AND HAZARDOUS SUBSTANCE which should be handled by trained staff only.
Handling Advice:	Minimize freezing and thawing.
Storage:	-20 °C
Storage Comment:	Aliquot and store at -20°C, with minimal freeze/thawing. A working aliquot may be refrigerated

at 4°C for a few weeks and still remain viable.

Images



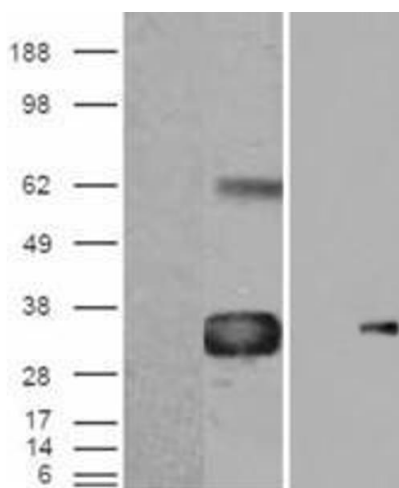
Immunofluorescence

Image 1. (ABIN238610) Immunofluorescence analysis of paraformaldehyde fixed U2OS cells, permeabilized with 0.15 % Triton. Primary incubation 1hr (10 µg/mL) followed by Alexa Fluor 488 secondary antibody (2 µg/mL), showing cytoplasmic staining. The nuclear stain is DAPI (b



Image 2. ABIN238610 (0.1 ug/ml) staining of HEK293 cell

lysate (35 ug protein in RIPA buffer). Primary incubation was 1 hour. Detected by chemiluminescence.



Western Blotting

Image 3. HEK293 overexpressing WISP1 (ABIN5369879) with C-terminal tag (DYKDDDDK) and probed with anti-DYKDDDDK in the left panel and with ABIN238610 in the right panel (mock transfection in first lane in each panel).

Please check the [product details page](#) for more images. Overall 7 images are available for ABIN238610.