

Datasheet for ABIN238612  
**anti-CSRP2 antibody (Internal Region)**

## 4 Images

[Go to Product page](#)

## Overview

Quantity:	100 µg
Target:	CSRP2
Binding Specificity:	Internal Region
Reactivity:	Human, Mouse, Rat
Host:	Goat
Clonality:	Polyclonal
Conjugate:	This CSRP2 antibody is un-conjugated
Application:	Western Blotting (WB), ELISA, Immunohistochemistry (IHC)

## Product Details

Purpose:	CRP2 / CSRP2
Immunogen:	Peptide with sequence C-ERLGKIPESVQP, from the internal region of the protein sequence according to NP_001312.1.
Sequence:	ERLGKIPESV QP
Isotype:	IgG
Cross-Reactivity:	Horse, Human, Mouse, Rat
Purification:	Purified from goat serum by ammonium sulphate precipitation followed by antigen affinity chromatography using the immunizing peptide.
Grade:	Verified

## Target Details

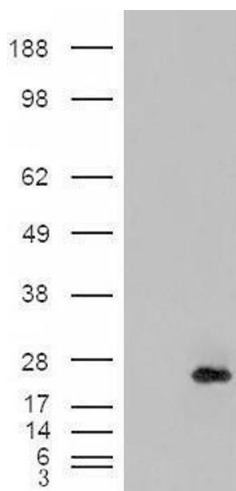
Target:	CSRP2
Alternative Name:	CSRP2 ( <a href="#">CSRP2 Products</a> )
Background:	CRP2, CSRP2, cysteine and glycine-rich protein 2, LMO5, SmLIM, LIM domain only 5, smooth muscle
Gene ID:	1466, 13008
NCBI Accession:	<a href="#">NP_001312</a>

## Application Details

Application Notes:	<p>Immunohistochemistry: In paraffin embedded Human Lung shows staining of the endothelial cells of a blood vessel. Recommended concentration: 3-6 µg/mL.</p> <p>Western Blot: Approx 26 kDa band observed in Human, Mouse and Rat Kidney lysates (calculated MW of 21.0 kDa according to NP_001312.1). The observed molecular weight corresponds to earlier findings in literature with different antibodies (Huber et al, J Bio</p> <p>Peptide ELISA: antibody detection limit dilution 1:64000.</p>
Restrictions:	For Research Use only

## Handling

Format:	Liquid
Concentration:	0.5 mg/mL
Buffer:	Supplied at 0.5 mg/mL in Tris saline, 0.02 % sodium azide, pH 7.3 with 0.5 % bovine serum albumin.
Preservative:	Sodium azide
Precaution of Use:	This product contains Sodium azide: a POISONOUS AND HAZARDOUS SUBSTANCE which should be handled by trained staff only.
Handling Advice:	Minimize freezing and thawing.
Storage:	-20 °C
Storage Comment:	Aliquot and store at -20°C, with minimal freeze/thawing. A working aliquot may be refrigerated at 4°C for a few weeks and still remain viable.

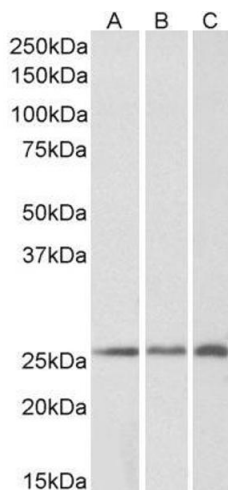


Western Blotting

**Image 1.** HEK293 overexpressing CRP2 (ABIN5397240) and probed with ABIN238612 (mock transfection in first lane).



**Image 2.** ABIN238612 (0.1µg/ml) staining of mouse kidney lysate (35µg protein in RIPA buffer). Primary incubation was 1 hour. Detected by chemiluminescence.



Western Blotting

**Image 3.** ABIN238612 (0.2µg/ml) staining of Human (A), Mouse (B) and Rat (C) Kidney lysates (35µg protein in RIPA buffer). Detected by chemiluminescence

Please check the [product details page](#) for more images. Overall 4 images are available for ABIN238612.