

Datasheet for ABIN238617

**anti-Cell Adhesion Molecule 4 antibody (C-Term)****3** Images[Go to Product page](#)

## Overview

Quantity:	100 µg
Target:	Cell Adhesion Molecule 4 (CADM4)
Binding Specificity:	C-Term
Reactivity:	Human
Host:	Goat
Clonality:	Polyclonal
Conjugate:	This Cell Adhesion Molecule 4 antibody is un-conjugated
Application:	Western Blotting (WB), ELISA, Immunohistochemistry (IHC)

## Product Details

Purpose:	CADM4 (C Terminus)
Immunogen:	Peptide with sequence C-REAFLNGSDGHKRKE, from the C Terminus of the protein sequence according to NP_660339.1.
Sequence:	REAFLNGSDG HKRKE
Isotype:	IgG
Cross-Reactivity:	Dog, Human, Mouse, Rat
Purification:	Purified from goat serum by ammonium sulphate precipitation followed by antigen affinity chromatography using the immunizing peptide.
Grade:	Verified

## Target Details

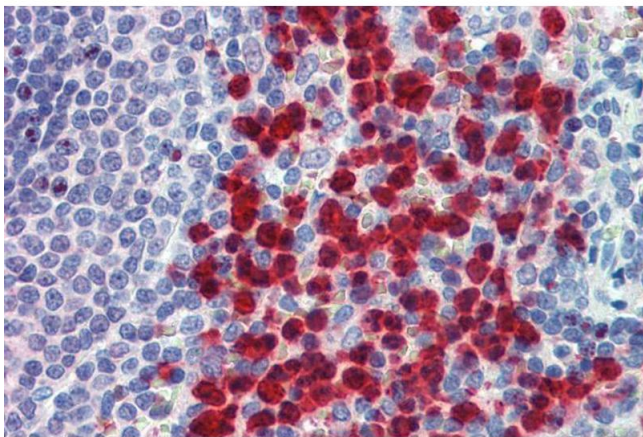
Target:	Cell Adhesion Molecule 4 (CADM4)
Alternative Name:	CADM4 ( <a href="#">CADM4 Products</a> )
Background:	CADM4, cell adhesion molecule 4 , IGSF4C, Necl-4, TSLL2, synCAM4, TSLC1-like 2, immunoglobulin superfamily, member 4C, nectin-like 4
Gene ID:	199731
NCBI Accession:	<a href="#">NP_660339</a>

## Application Details

Application Notes:	Immunohistochemistry: Paraffin embedded Human Spleen and Liver. Recommended concentration: 2.5 µg/mL.  Western Blot: Approx 70 kDa band observed in Human Brain (Cerebellum) lysates (calculated MW of 42.8 kDa according to NP_660339.1). The observed molecular weight corresponds to findings with EB08040, a product of different design reacting to a different p  Peptide ELISA: antibody detection limit dilution 1:32000.
Restrictions:	For Research Use only

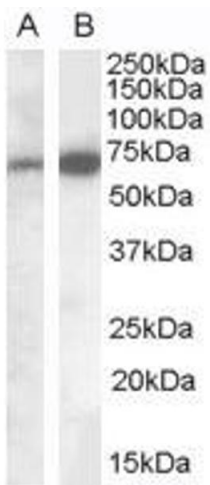
## Handling

Format:	Liquid
Concentration:	0.5 mg/mL
Buffer:	Supplied at 0.5 mg/mL in Tris saline, 0.02 % sodium azide, pH 7.3 with 0.5 % bovine serum albumin.
Preservative:	Sodium azide
Precaution of Use:	This product contains Sodium azide: a POISONOUS AND HAZARDOUS SUBSTANCE which should be handled by trained staff only.
Handling Advice:	Minimize freezing and thawing.
Storage:	-20 °C
Storage Comment:	Aliquot and store at -20°C, with minimal freeze/thawing. A working aliquot may be refrigerated at 4°C for a few weeks and still remain viable.



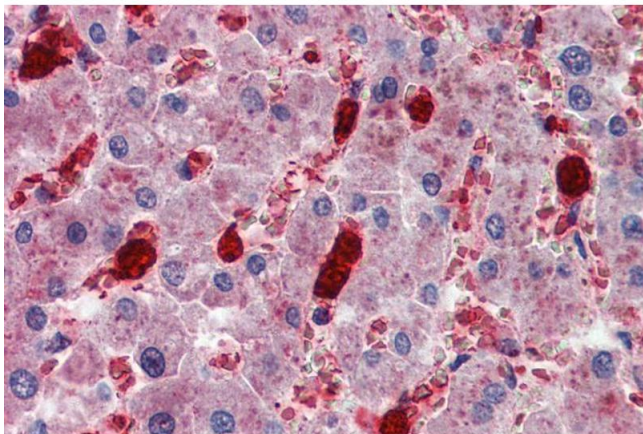
#### Immunohistochemistry

**Image 1.** ABIN238617 (2.5µg/ml) staining of paraffin embedded Human Spleen. Steamed antigen retrieval with citrate buffer pH 6, AP-staining.



#### Western Blotting

**Image 2.** Staining of Human Brain (Cerebellum) lysate (35µg protein in RIPA buffer). A) ABIN238560 (0.1µg/ml) and B) ABIN238617 (0.05µg/ml). Detected by chemiluminescence.



#### Immunohistochemistry

**Image 3.** ABIN238617 (2.5µg/ml) staining of paraffin embedded Human Liver. Steamed antigen retrieval with citrate buffer pH 6, AP-staining.