

Datasheet for ABIN238622

## anti-ABCB5 antibody (Internal Region)



[Go to Product page](#)

3 Images

1 Publication

### Overview

Quantity:	100 µg
Target:	ABCB5
Binding Specificity:	Internal Region
Reactivity:	Human
Host:	Goat
Clonality:	Polyclonal
Conjugate:	This ABCB5 antibody is un-conjugated
Application:	Western Blotting (WB), ELISA, Flow Cytometry (FACS)

### Product Details

Purpose:	ABCB5
Immunogen:	Peptide with sequence C-QTQHRNTSKKAQ , from the internal region of the protein sequence according to NP_848654.3, NP_001157413.1.
Sequence:	QTQHRNTSKK AQ
Isotype:	IgG
Specificity:	This antibody is expected to recognise both reported isoforms (NP_848654.3, NP_001157413.1)
Cross-Reactivity:	Human
Purification:	Purified from goat serum by ammonium sulphate precipitation followed by antigen affinity chromatography using the immunizing peptide.

## Product Details

Grade: Verified

## Target Details

Target: ABCB5

Alternative Name: ABCB5 ([ABCB5 Products](#))

Background: ATP-binding cassette, sub-family B (MDR/TAP), member 5 , ABCB5alpha, ABCB5beta, EST422562, ATP-binding cassette, sub-family B, member 5N: P-glycoprotein ABCB5

Molecular Weight: 89.8kDa

Gene ID: 340273

NCBI Accession: [NP\\_848654](#), [NP\\_001157413](#)

## Application Details

Application Notes: Western Blot: Approx 80 kDa band observed in lysates of cell line A431(calculated MW of 89.8 kDa according to NP\_848654.3). Recommended concentration: 0.3-1 µg/mL. Primary incubation was 1 hour.  
Peptide ELISA: antibody detection limit dilution 1:32000.

Comment: **Flow Cytometry:** Flow cytometric analysis of HepG2 cells. Recommended concentration: 10ug/ml.

Restrictions: For Research Use only

## Handling

Format: Liquid

Concentration: 0.5 mg/mL

Buffer: Supplied at 0.5 mg/mL in Tris saline, 0.02 % sodium azide, pH 7.3 with 0.5 % bovine serum albumin.

Preservative: Sodium azide

Precaution of Use: This product contains Sodium azide: a POISONOUS AND HAZARDOUS SUBSTANCE which should be handled by trained staff only.

Handling Advice: Minimize freezing and thawing.

Storage: -20 °C

## Handling

Storage Comment: Aliquot and store at -20°C, with minimal freeze/thawing. A working aliquot may be refrigerated at 4°C for a few weeks and still remain viable.

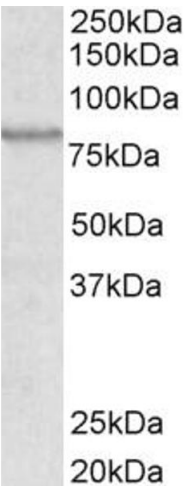
## Publications

Product cited in: Cheung, Cheung, Cheng, Wong, Fan: "Granulin-epithelin precursor and ATP-dependent binding cassette (ABC)B5 regulate liver cancer cell chemoresistance." in: **Gastroenterology**, Vol. 140, Issue 1, pp. 344-55, (2010) ([PubMed](#)).

## Images

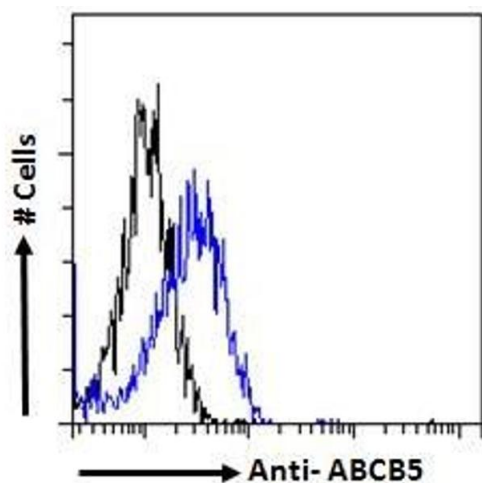


**Image 1.** ABIN238622 (0.03µg/ml) staining of A431 cell lysate (35µg protein in RIPA buffer). Primary incubation was 1 hour. Detected by chemiluminescence.



### Western Blotting

**Image 2.** ABIN238622 (0.3µg/ml) staining of lysates of cell line A431 (35µg protein in RIPA buffer). Detected by chemiluminescence.



### Flow Cytometry

**Image 3.** Flow cytometric analysis of paraformaldehyde fixed HepG2 cells (blue line), permeabilized with 0.5% Triton. Primary incubation 1hr (10ug/ml) followed by Alexa Fluor 488 secondary antibody (1ug/ml). IgG control: Unimmunized goat IgG (black line) followed