

Datasheet for ABIN238628

anti-alpha-Mannosidase II antibody (Internal Region)**2** Images[Go to Product page](#)

Overview

Quantity:	100 µg
Target:	alpha-Mannosidase II (MAN2A1)
Binding Specificity:	Internal Region
Reactivity:	Human
Host:	Goat
Clonality:	Polyclonal
Conjugate:	This alpha-Mannosidase II antibody is un-conjugated
Application:	Western Blotting (WB), ELISA

Product Details

Purpose:	MAN2A1
Immunogen:	Peptide with sequence C-KISSDIKSQNR, from the internal region of the protein sequence according to NP_002363.2.
Sequence:	KISSDIKSQN R
Isotype:	IgG
Cross-Reactivity:	Human
Purification:	Purified from goat serum by ammonium sulphate precipitation followed by antigen affinity chromatography using the immunizing peptide.
Grade:	Verified

Target Details

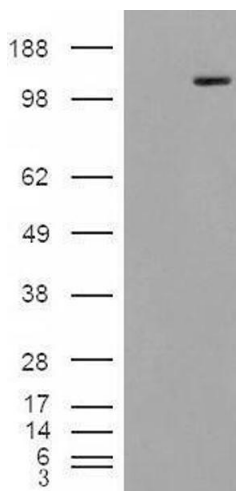
Target:	alpha-Mannosidase II (MAN2A1)
Alternative Name:	MAN2A1 (MAN2A1 Products)
Background:	MAN2A1, mannosidase, alpha, class 2A, member 1, GOLIM7, MANA2, MANII, Golgi alpha-mannosidase II, golgi integral membrane protein 7, mannosidase, alpha type II, mannosyl-oligosaccharide 1,3-1,6-alpha-mannosidase
Gene ID:	4124
NCBI Accession:	NP_002363

Application Details

Application Notes:	Western Blot: Approx. 150 kDa band observed in Human Placenta lysates (calculated MW of 131 kDa according to NP_002363.2). In transfected HEK293 transiently expressing MAN2A1 a band of approx. 98 kDa is observed. This band is not observed in the non-transfected cells. Peptide ELISA: antibody detection limit dilution 1:16000.
Restrictions:	For Research Use only

Handling

Format:	Liquid
Concentration:	0.5 mg/mL
Buffer:	Supplied at 0.5 mg/mL in Tris saline, 0.02 % sodium azide, pH 7.3 with 0.5 % bovine serum albumin.
Preservative:	Sodium azide
Precaution of Use:	This product contains Sodium azide: a POISONOUS AND HAZARDOUS SUBSTANCE which should be handled by trained staff only.
Handling Advice:	Minimize freezing and thawing.
Storage:	-20 °C
Storage Comment:	Aliquot and store at -20°C, with minimal freeze/thawing. A working aliquot may be refrigerated at 4°C for a few weeks and still remain viable.



Western Blotting

Image 1. HEK293 overexpressing Man2A1 (ABIN5338085) and probed with ABIN238628 (mock transfection in first lane).

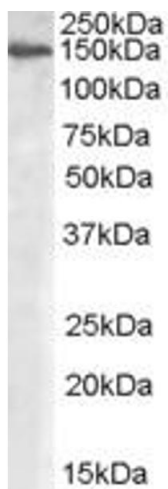


Image 2. ABIN238628 (0.3µg/ml) staining of Human Placenta lysate (35µg protein in RIPA buffer). Primary incubation was 1 hour. Detected by chemiluminescence.