

Datasheet for ABIN238629

**anti-PTPRM antibody (Internal Region)**[Go to Product page](#)**2** Images

## Overview

|                      |                                      |
|----------------------|--------------------------------------|
| Quantity:            | 100 µg                               |
| Target:              | PTPRM                                |
| Binding Specificity: | Internal Region                      |
| Reactivity:          | Human                                |
| Host:                | Goat                                 |
| Clonality:           | Polyclonal                           |
| Conjugate:           | This PTPRM antibody is un-conjugated |
| Application:         | ELISA, Immunohistochemistry (IHC)    |

## Product Details

|                   |   |
|-------------------|---|
| Purpose:          | PTPRM   |
| Immunogen:        | Peptide with sequence C-KLIRQVDKWQEEYN, from the internal region of the protein sequence according to NP_001098714.1, NP_002836.3.    |
| Sequence:         | KLIRQVDKWQ EEYN   |
| Isotype:          | IgG   |
| Specificity:      | This antibody is expected to recognise both reported isoforms (NP_001098714.1 and NP_002836.3).                                       |
| Cross-Reactivity: | Dog, Human, Mouse   |
| Purification:     | Purified from goat serum by ammonium sulphate precipitation followed by antigen affinity chromatography using the immunizing peptide. |

## Product Details

Grade: Verified

## Target Details

Target: PTPRM

Alternative Name: PTPRM ([PTPRM Products](#))

Background: PTPRM, protein tyrosine phosphatase, receptor type, M, MGC166994, PTPRL1, R-PTP-MU, RPTPM, RPTPU, hR-PTPu, protein tyrosine phosphatase mu, protein tyrosine phosphatase, receptor type, mu polypeptide

Gene ID: 5797

NCBI Accession: [NP\\_001098714](#), [NP\\_002836](#)

## Application Details

Application Notes: Immunohistochemistry: Paraffin embedded Human Uterus and Thyroid. Recommended concentration: 3.75 µg/mL.

Western Blot: Preliminary experiments gave bands at approx 110 kDa and 16 kDa in Rat Retina lysates after 0.1 µg/mL antibody staining. Please note that currently we cannot find an explanation in the literature for the bands we observe given the calculated s

Peptide ELISA: antibody detection limit dilution 1:16000.

Restrictions: For Research Use only

## Handling

Format: Liquid

Concentration: 0.5 mg/mL

Buffer: Supplied at 0.5 mg/mL in Tris saline, 0.02 % sodium azide, pH 7.3 with 0.5 % bovine serum albumin.

Preservative: Sodium azide

Precaution of Use: This product contains Sodium azide: a POISONOUS AND HAZARDOUS SUBSTANCE which should be handled by trained staff only.

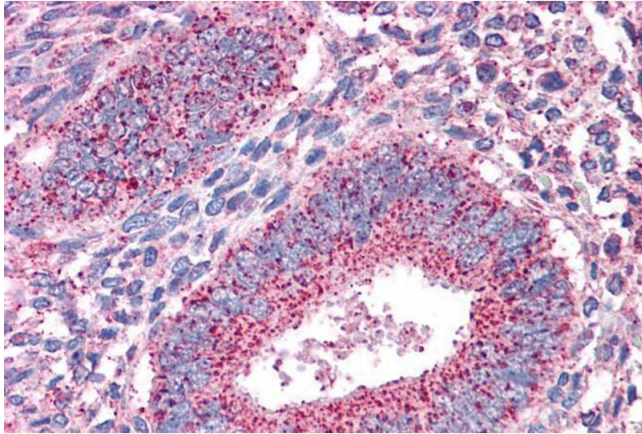
Handling Advice: Minimize freezing and thawing.

Storage: -20 °C

## Handling

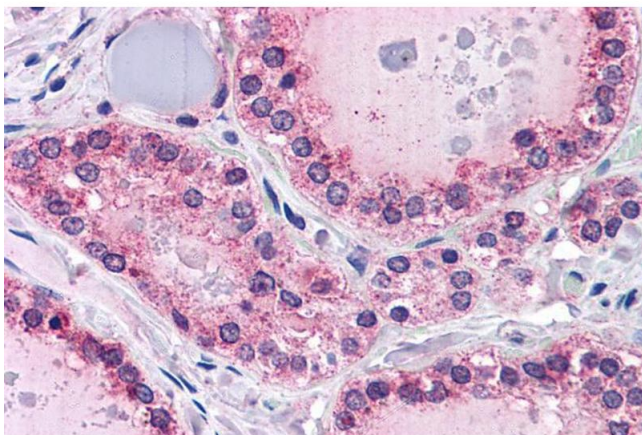
Storage Comment: Aliquot and store at -20°C, with minimal freeze/thawing. A working aliquot may be refrigerated at 4°C for a few weeks and still remain viable.

## Images



### Immunohistochemistry

**Image 1.** ABIN238629 (3.75µg/ml) staining of paraffin embedded Human Uterus. Steamed antigen retrieval with citrate buffer pH 6, AP-staining.



### Immunohistochemistry

**Image 2.** ABIN238629 (3.75µg/ml) staining of paraffin embedded Human Thyroid. Steamed antigen retrieval with citrate buffer pH 6, AP-staining.