

Datasheet for ABIN238630
anti-PPP2R3A antibody (Internal Region)[Go to Product page](#)

1 Image

Overview

Quantity:	100 µg
Target:	PPP2R3A
Binding Specificity:	Internal Region
Reactivity:	Human
Host:	Goat
Clonality:	Polyclonal
Conjugate:	This PPP2R3A antibody is un-conjugated
Application:	ELISA, Immunohistochemistry (IHC)

Product Details

Purpose:	PPP2R3A
Immunogen:	Peptide with sequence C-QKDVENDGPEPSD, from the internal region of the protein sequence according to NP_002709.2, NP_871626.1.
Sequence:	QKDVENDGPE PSD
Isotype:	IgG
Specificity:	This antibody is expected to recognise both reported isoforms (NP_002709.2, NP_871626.1).
Cross-Reactivity:	Human
Purification:	Purified from goat serum by ammonium sulphate precipitation followed by antigen affinity chromatography using the immunizing peptide.
Grade:	Verified

Target Details

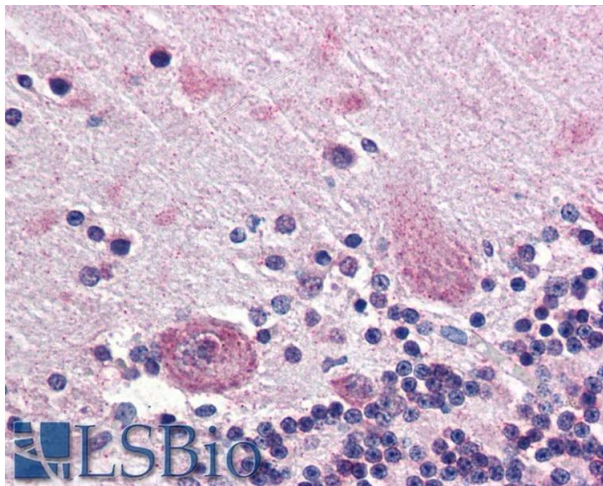
Target:	PPP2R3A
Alternative Name:	PPP2R3A (PPP2R3A Products)
Background:	PPP2R3A, protein phosphatase 2 (formerly 2A), regulatory subunit B", alpha , PPP2R3, PR130, PR72, PP2A, subunit B, B"-PR72/PR130, PP2A, subunit B, B72/B130 isoforms, PP2A, subunit B, R3 isoform, Serine/threonine protein phosphatase 2A, 72/130 kDa regul
Gene ID:	5523
NCBI Accession:	NP_002709 , NP_871626
Pathways:	PI3K-Akt Signaling

Application Details

Application Notes:	Immunohistochemistry: Paraffin embedded Human Brain (Cerebellum). Recommended concentration: 5 µg/mL. Western Blot: Preliminary experiments gave an approx 80 kDa band in Human Skeletal Muscle lysates after 1 µg/mL antibody staining. Please note that currently we cannot find an explanation in the literature for the band we observe given the calculated size Peptide ELISA: antibody detection limit dilution 1:16000.
Restrictions:	For Research Use only

Handling

Format:	Liquid
Concentration:	0.5 mg/mL
Buffer:	Supplied at 0.5 mg/mL in Tris saline, 0.02 % sodium azide, pH 7.3 with 0.5 % bovine serum albumin.
Preservative:	Sodium azide
Precaution of Use:	This product contains Sodium azide: a POISONOUS AND HAZARDOUS SUBSTANCE which should be handled by trained staff only.
Handling Advice:	Minimize freezing and thawing.
Storage:	-20 °C
Storage Comment:	Aliquot and store at -20°C, with minimal freeze/thawing. A working aliquot may be refrigerated at 4°C for a few weeks and still remain viable.



Immunohistochemistry

Image 1. ABIN238630 (5µg/ml) staining of paraffin embedded Human Cerebellum. Steamed antigen retrieval with citrate buffer pH 6, AP-staining.