

Datasheet for ABIN238631
anti-EPB41L5 antibody (Internal Region)

5 Images

[Go to Product page](#)

Overview

Quantity:	100 µg
Target:	EPB41L5
Binding Specificity:	Internal Region
Reactivity:	Human
Host:	Goat
Clonality:	Polyclonal
Conjugate:	This EPB41L5 antibody is un-conjugated
Application:	Western Blotting (WB), ELISA, Flow Cytometry (FACS), Immunofluorescence (IF)

Product Details

Purpose:	EBPL41L5
Immunogen:	Peptide with sequence C-ENLPQSPGTDQHD, from the internal region of the protein sequence according to NP_065960.2.
Sequence:	ENLPQSPGTD QHD
Isotype:	IgG
Cross-Reactivity:	Human
Purification:	Purified from goat serum by ammonium sulphate precipitation followed by antigen affinity chromatography using the immunizing peptide.
Grade:	Verified

Target Details

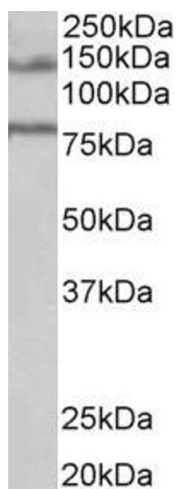
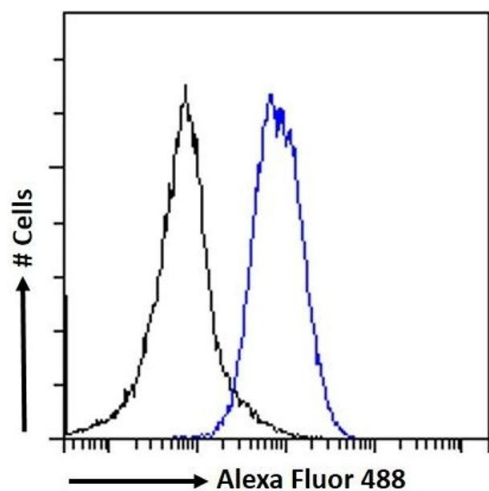
Target:	EPB41L5
Alternative Name:	EPB41L5 (EPB41L5 Products)
Background:	EPB41L5, erythrocyte membrane protein band 4.1 like 5, BE37, FLJ12957, KIAA1548
Molecular Weight:	81.9kDa
Gene ID:	57669
NCBI Accession:	NP_065960

Application Details

Application Notes:	Western Blot: Approx. 80 kDa band observed in lysates of cell line A431 and approx. 75 kDa in lysates of cell line MCF7 (calculated MW of 81.9 kDa according to NP_065960.2). Recommended concentration: 0.3-1 µg/mL. Primary incubation 1 hour at room temperature Peptide ELISA: antibody detection limit dilution 1:8000.
Comment:	Immunofluorescence: Strong expression of the protein seen in U2OS and A549 cells. Recommended concentration: 10µg/ml. Flow Cytometry: Flow cytometric analysis of A549 cells. Recommended concentration: 10ug/ml.
Restrictions:	For Research Use only

Handling

Format:	Liquid
Concentration:	0.5 mg/mL
Buffer:	Supplied at 0.5 mg/mL in Tris saline, 0.02 % sodium azide, pH 7.3 with 0.5 % bovine serum albumin.
Preservative:	Sodium azide
Precaution of Use:	This product contains Sodium azide: a POISONOUS AND HAZARDOUS SUBSTANCE which should be handled by trained staff only.
Handling Advice:	Minimize freezing and thawing.
Storage:	-20 °C
Storage Comment:	Aliquot and store at -20°C, with minimal freeze/thawing. A working aliquot may be refrigerated at 4°C for a few weeks and still remain viable.



Flow Cytometry

Image 1. (ABIN238631) Flow cytometric analysis of paraformaldehyde fixed A549 cells (blue line), permeabilized with 0.5 % Triton. Primary incubation 1hr (10 µg/mL) followed by Alexa Fluor 488 secondary antibody (1 µg/mL). IgG control: Unimmunized goat IgG (black line) followed by Alexa Fluor 488 secondary antibody.

Western Blotting

Image 2. ABIN238631 (1µg/ml) staining of Human Brain (Hippocampus) lysate (35µg protein in RIPA buffer). Primary incubation was 1 hour. Detected by chemiluminescence.

Western Blotting

Image 3. (ABIN238631) (1 µg/mL) staining of A431 (A) and (0.3 µg/mL) MCF7 (B) cell lysate (35 µg protein in RIPA buffer). Detected by chemiluminescence.

Please check the [product details page](#) for more images. Overall 5 images are available for ABIN238631.