

Datasheet for ABIN238640
anti-ATP13A1 antibody (Internal Region)

2 Images

[Go to Product page](#)

Overview

Quantity:	100 µg
Target:	ATP13A1
Binding Specificity:	Internal Region
Reactivity:	Human
Host:	Goat
Clonality:	Polyclonal
Conjugate:	This ATP13A1 antibody is un-conjugated
Application:	ELISA, Western Blotting (WB), Immunohistochemistry (IHC)

Product Details

Purpose:	ATP13A1
Immunogen:	Peptide with sequence C-REARARSPEKQEQ, from the internal region of the protein sequence according to NP_065143.2.
Sequence:	REARARSPEK QEQ
Isotype:	IgG
Cross-Reactivity:	Dog, Human, Mouse, Rat
Purification:	Purified from goat serum by ammonium sulphate precipitation followed by antigen affinity chromatography using the immunizing peptide.
Grade:	Verified

Target Details

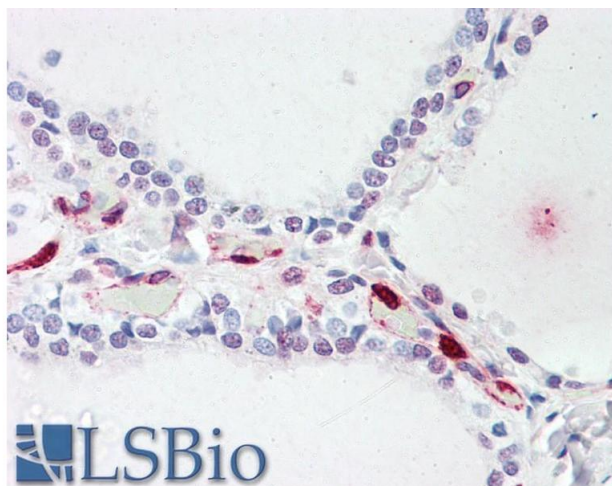
Target:	ATP13A1
Alternative Name:	ATP13A1 (ATP13A1 Products)
Background:	ATP13A1, ATPase type 13A1, ATP13A, CGI-152, DKFZp761L1623, FLJ31858, FLJ41786, FLJ43873, FLJ90317, KIAA1825, cation transporting ATPase, cation-transporting ATPase
Gene ID:	57130, 170759, 290673
NCBI Accession:	NP_065143

Application Details

Application Notes:	Immunohistochemistry: Paraffin embedded Human Thyroid. Recommended concentration: 5 µg/mL. Western Blot: Approx 110 kDa band observed in Human Kidney lysates (calculated MW of 133 kDa according to NP_065143.2). Recommended concentration: 0.3-1 µg/mL. Peptide ELISA: antibody detection limit dilution 1:64000.
Restrictions:	For Research Use only

Handling

Format:	Liquid
Concentration:	0.5 mg/mL
Buffer:	Supplied at 0.5 mg/mL in Tris saline, 0.02 % sodium azide, pH 7.3 with 0.5 % bovine serum albumin.
Preservative:	Sodium azide
Precaution of Use:	This product contains Sodium azide: a POISONOUS AND HAZARDOUS SUBSTANCE which should be handled by trained staff only.
Handling Advice:	Minimize freezing and thawing.
Storage:	-20 °C
Storage Comment:	Aliquot and store at -20°C, with minimal freeze/thawing. A working aliquot may be refrigerated at 4°C for a few weeks and still remain viable.



Immunohistochemistry

Image 1. ABIN238640 (5µg/ml) staining of paraffin embedded Human Thyroid. Steamed antigen retrieval with citrate buffer pH 6, AP-staining.



Western Blotting

Image 2. ABIN238640 (0.3µg/ml) staining of Human Kidney lysate (35µg protein in RIPA buffer). Primary incubation was 1 hour. Detected by chemiluminescence.