

Datasheet for ABIN238645  
**anti-APOBEC3A antibody (Internal Region)**[Go to Product page](#)

## 4 Images

## Overview

Quantity:	100 µg
Target:	APOBEC3A
Binding Specificity:	Internal Region
Reactivity:	Human
Host:	Goat
Clonality:	Polyclonal
Conjugate:	This APOBEC3A antibody is un-conjugated
Application:	Western Blotting (WB), ELISA, Immunohistochemistry (IHC), Immunofluorescence (IF), Flow Cytometry (FACS)

## Product Details

Purpose:	Phorbol 1 / APOBEC3A
Immunogen:	Peptide with sequence C-TSNFNNGIGRHKTY, from the internal region of the protein sequence according to NP_663745.1.
Sequence:	TSNFNNGIGR HKTY
Isotype:	IgG
Cross-Reactivity:	Human
Purification:	Purified from goat serum by ammonium sulphate precipitation followed by antigen affinity chromatography using the immunizing peptide.
Grade:	Verified

## Target Details

Target:	APOBEC3A
Alternative Name:	APOBEC3A ( <a href="#">APOBEC3A Products</a> )
Background:	APOBEC3A, apolipoprotein B mRNA editing enzyme, catalytic polypeptide-like 3A, ARP3, PHRBN, bK150C2.1, phorbolin 1
Gene ID:	200315
NCBI Accession:	<a href="#">NP_663745</a>

## Application Details

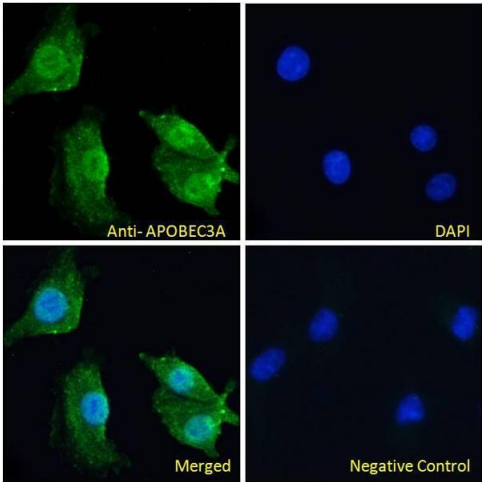
Application Notes:	<p>Immunohistochemistry: In paraffin embedded Human Tonsil shows staining of distinct parts of the nucleus in lymphoid cells. Recommended concentration: 3-6 µg/mL.</p> <p>Western Blot: Approx. 26-28 kDa band observed in Human Spleen, Tonsil and Peripheral Blood Monocytes (PBM) lysates (calculated MW of 23.0 kDa according to Human NP_663745.1). This molecular weight is routinely observed by other sources. Recommended concentration</p> <p>Peptide ELISA: antibody detection limit dilution 1:8000.</p>
Comment:	<p><b>Immunofluorescence:</b> Strong expression of the protein seen in the nuclei of A431 and A549 cells. Recommended concentration: 10µg/ml.</p> <p><b>Flow Cytometry:</b> Flow cytometric analysis of Jurkat cells. Recommended concentration:</p>
Restrictions:	For Research Use only

## Handling

Format:	Liquid
Concentration:	0.5 mg/mL
Buffer:	Supplied at 0.5 mg/mL in Tris saline, 0.02 % sodium azide, pH 7.3 with 0.5 % bovine serum albumin.
Preservative:	Sodium azide
Precaution of Use:	This product contains Sodium azide: a POISONOUS AND HAZARDOUS SUBSTANCE which should be handled by trained staff only.
Handling Advice:	Minimize freezing and thawing.
Storage:	-20 °C
Storage Comment:	Aliquot and store at -20°C, with minimal freeze/thawing. A working aliquot may be refrigerated

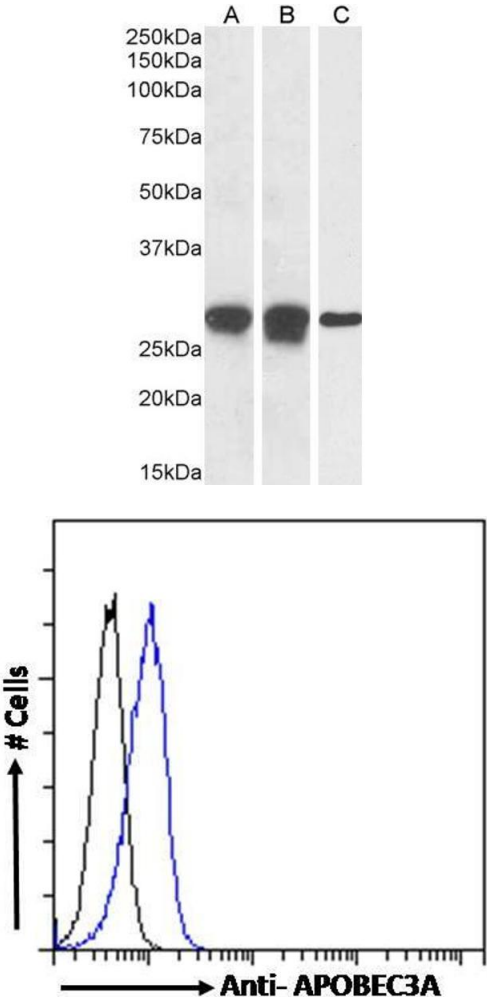
at 4°C for a few weeks and still remain viable.

Images



**Immunofluorescence**

**Image 1.** ABIN238645 Immunofluorescence analysis of paraformaldehyde fixed A549 cells, permeabilized with 0.15% Triton. Primary incubation 1hr (10ug/ml) followed by Alexa Fluor 488 secondary antibody (2ug/ml), showing nuclear and some cytoplasmic staining. The nuclear stain is DAPI (blue). Negative control: Unimmunized goat IgG (10ug/ml) followed by Alexa Fluor 488 secondary antibody (2ug/ml).



**Western Blotting**

**Image 2.** ABIN238645 (1µg/ml) staining of Human Spleen (A), Tonsil (B) and (0.1ug/ml) PBM (C) lysate (35µg protein in RIPA buffer). Detected by chemiluminescence.

**Flow Cytometry**

**Image 3.** ABIN238645 Flow cytometric analysis of paraformaldehyde fixed Jurkat cells (blue line), permeabilized with 0.5% Triton. Primary incubation 1hr (10ug/ml) followed by Alexa Fluor 488 secondary antibody (1ug/ml). IgG control: Unimmunized goat IgG (black line) followed by Alexa Fluor 488 secondary antibody.

Please check the [product details page](#) for more images. Overall 4 images are available for ABIN238645.