

Datasheet for ABIN238667
anti-M6PR antibody (Internal Region)[Go to Product page](#)

1 Image

Overview

Quantity:	100 µg
Target:	M6PR
Binding Specificity:	Internal Region
Reactivity:	Human, Mouse, Rat, Cow, Dog
Host:	Goat
Clonality:	Polyclonal
Conjugate:	This M6PR antibody is un-conjugated
Application:	ELISA

Product Details

Purpose:	M6PR
Immunogen:	Peptide with sequence KGGDEYDNHCGKEQ, from the internal region of the protein sequence according to NP_002346.1.
Sequence:	KGGDEYDNHC GKEQ
Isotype:	IgG
Predicted Reactivity:	Human, Mouse, Rat, Dog, Cow
Purification:	Purified from goat serum by ammonium sulphate precipitation followed by antigen affinity chromatography using the immunizing peptide.
Grade:	Recent

Target Details

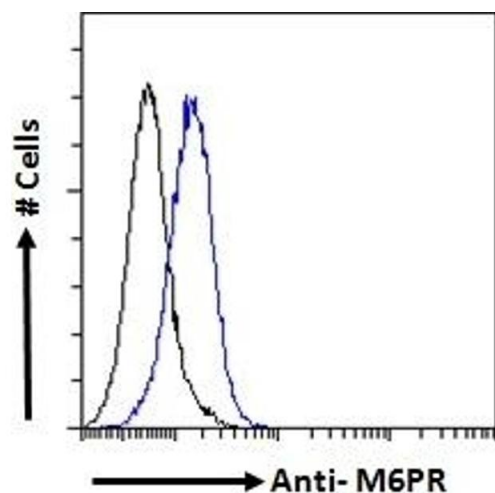
Target:	M6PR
Alternative Name:	M6PR (M6PR Products)
Background:	M6PR, mannose-6-phosphate receptor (cation dependent) , CD-MPR, FLJ32994, MPR46, SMPR, 46- kDa mannose 6-phosphate receptor, Mr 46,000 Man6PR, cation-dependent mannose-6-phosphate receptor
Gene ID:	4074
NCBI Accession:	NP_002346

Application Details

Application Notes:	<p>DS WB Results: Preliminary experiments gave bands at approx 70 kDa and 35 kDa in Human Lymph Node and Thyroid Gland lysates after 1 µg/mL antibody staining. Please note that currently we cannot find an explanation in the literature for the band we observe given the calculated size of 31.0 kDa according to NP_002346.1. Both detected bands were successfully blocked by incubation with the immunizing peptide (and BLAST results with the immunizing peptide sequence did not identify any other proteins to explain the additional bands). Have any further splice variants/modified forms been reported?</p> <p>Peptide ELISA: antibody detection limit dilution 1:4000.</p>
Restrictions:	For Research Use only

Handling

Format:	Liquid
Concentration:	0.5 mg/mL
Buffer:	Supplied at 0.5 mg/mL in Tris saline, 0.02 % sodium azide, pH 7.3 with 0.5 % bovine serum albumin.
Preservative:	Sodium azide
Precaution of Use:	This product contains Sodium azide: a POISONOUS AND HAZARDOUS SUBSTANCE which should be handled by trained staff only.
Handling Advice:	Minimize freezing and thawing.
Storage:	-20 °C
Storage Comment:	Aliquot and store at -20°C, with minimal freeze/thawing. A working aliquot may be refrigerated at 4°C for a few weeks and still remain viable.



Flow Cytometry

Image 1. ABIN238667 Flow cytometric analysis of paraformaldehyde fixed A549 cells (blue line), permeabilized with 0.5 % Triton. Primary incubation 1hr (10 µg/mL) followed by Alexa Fluor 488 secondary antibody (1 µg/mL). IgG control: Unimmunized goat IgG (black line) fol