



Datasheet for ABIN238672
anti-Aromatase antibody (Internal Region)



[Go to Product page](#)

2 Images

Overview

Quantity:	100 µg
Target:	Aromatase (CYP19A1)
Binding Specificity:	Internal Region
Reactivity:	Human
Host:	Goat
Clonality:	Polyclonal
Conjugate:	This Aromatase antibody is un-conjugated
Application:	Western Blotting (WB), Immunohistochemistry (IHC), ELISA

Product Details

Purpose:	Aromatase / CYP19A1
Immunogen:	Peptide with sequence C-HDLSLHPDETKN, from the internal region of the protein sequence according to NP_000094.2, NP_112503.1.
Sequence:	HDLSLHPDET KN
Isotype:	IgG
Specificity:	This antibody is expected to recognise both reported isoforms (NP_000094.2 and NP_112503.1), which are identical
Cross-Reactivity:	Human
Purification:	Purified from goat serum by ammonium sulphate precipitation followed by antigen affinity chromatography using the immunizing peptide.

Product Details

Grade: Verified

Target Details

Target: Aromatase (CYP19A1)

Alternative Name: CYP19A1 ([CYP19A1 Products](#))

Background: CYP19A1, cytochrome P450, family 19, subfamily A, polypeptide 1 , ARO, ARO1, CPV1, CYAR, CYP19, MGC104309, P-450AROM, aromataseN: cytochrome P450, family 19, cytochrome P450, subfamily XIX (aromatization of androgens), estrogen synthetase, flavoprotein-li

Gene ID: 1588

NCBI Accession: [NP_000094](#), [NP_112503](#)

Pathways: [Metabolism of Steroid Hormones and Vitamin D](#), [Steroid Hormone Biosynthesis](#), [C21-Steroid Hormone Metabolic Process](#), [Carbohydrate Homeostasis](#)

Application Details

Application Notes: Immunohistochemistry: Paraffin embedded Human Placenta. Recommended concentration: 4 µg/mL.
Western Blot: Approx 50-55 kDa band observed in Human Placenta lysates (calculated MW of 57.9 kDa according to NP_000094.2 and NP_112503.1). Recommended concentration: 0.1-0.3 µg/mL. Primary incubation was 1 hour.
Peptide ELISA: antibody detection limit dilution 1:128000.

Restrictions: For Research Use only

Handling

Format: Liquid

Concentration: 0.5 mg/mL

Buffer: Supplied at 0.5 mg/mL in Tris saline, 0.02 % sodium azide, pH 7.3 with 0.5 % bovine serum albumin.

Preservative: Sodium azide

Precaution of Use: This product contains Sodium azide: a POISONOUS AND HAZARDOUS SUBSTANCE which should be handled by trained staff only.

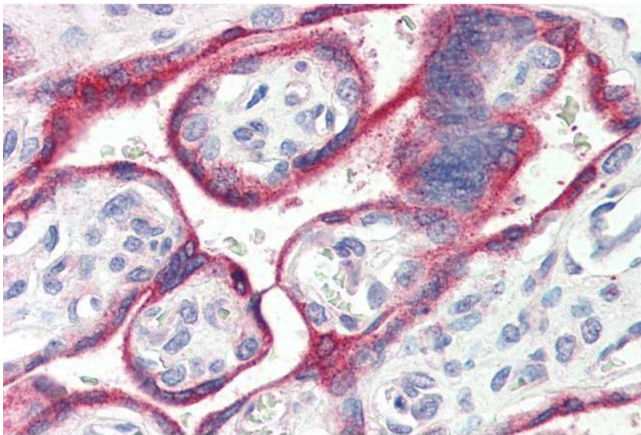
Handling Advice: Minimize freezing and thawing.

Handling

Storage: -20 °C

Storage Comment: Aliquot and store at -20°C, with minimal freeze/thawing. A working aliquot may be refrigerated at 4°C for a few weeks and still remain viable.

Images



Immunohistochemistry

Image 1. ABIN238672 (4µg/ml) staining of paraffin embedded Human Placenta. Steamed antigen retrieval with citrate buffer pH 6, AP-staining.



Western Blotting

Image 2. ABIN238672 (0.1µg/ml) staining of Human Placenta lysate (35µg protein in RIPA buffer). Detected by chemiluminescence.