



[Go to Product page](#)

Datasheet for ABIN238677
anti-FZD7 antibody (C-Term)

2 Images

Overview

Quantity:	100 µg
Target:	FZD7
Binding Specificity:	C-Term
Reactivity:	Human
Host:	Goat
Clonality:	Polyclonal
Conjugate:	This FZD7 antibody is un-conjugated
Application:	Western Blotting (WB), ELISA, Immunohistochemistry (IHC)

Product Details

Purpose:	Frizzled 7
Immunogen:	Peptide with sequence C-RFYHRLSHSSKGET, from the C Terminus of the protein sequence according to NP_003498.1.
Sequence:	RFYHRLSHSS KGET
Isotype:	IgG
Cross-Reactivity:	Human, Mouse
Purification:	Purified from goat serum by ammonium sulphate precipitation followed by antigen affinity chromatography using the immunizing peptide.
Grade:	Verified

Target Details

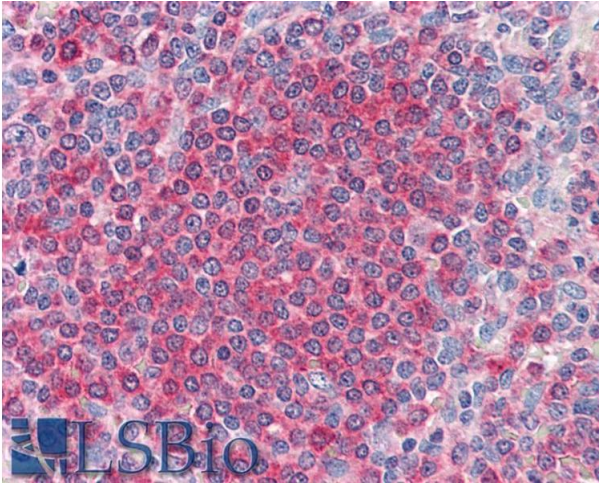
Target:	FZD7
Alternative Name:	FZD7 (FZD7 Products)
Background:	Rizzled 7, frizzled homolog 7 (Drosophila), FZD7, FzE3, Frizzled, drosophila, homolog of, 7
Gene ID:	8324, 14369
NCBI Accession:	NP_003498
Pathways:	WNT Signaling , Stem Cell Maintenance

Application Details

Application Notes:	Immunohistochemistry: Paraffin embedded Human Spleen. Recommended concentration: 5 µg/mL. Western Blot: Approx 60 kDa band observed in lysates of cell lines HEK293 and HepG2 (calculated MW of 63.6 kDa according to NP_003498.1). Recommended concentration: 0.3-1 µg/mL. Peptide ELISA: antibody detection limit dilution 1:64000.
Restrictions:	For Research Use only

Handling

Format:	Liquid
Concentration:	0.5 mg/mL
Buffer:	Supplied at 0.5 mg/mL in Tris saline, 0.02 % sodium azide, pH 7.3 with 0.5 % bovine serum albumin.
Preservative:	Sodium azide
Precaution of Use:	This product contains Sodium azide: a POISONOUS AND HAZARDOUS SUBSTANCE which should be handled by trained staff only.
Handling Advice:	Minimize freezing and thawing.
Storage:	-20 °C
Storage Comment:	Aliquot and store at -20°C, with minimal freeze/thawing. A working aliquot may be refrigerated at 4°C for a few weeks and still remain viable.



Immunohistochemistry

Image 1. ABIN238677 (5µg/ml) staining of paraffin embedded Human Spleen. Steamed antigen retrieval with citrate buffer pH 6, AP-staining.



Image 2. ABIN238677 (0.3µg/ml) staining of HepG2 cell lysate (35µg protein in RIPA buffer). Primary incubation was 1 hour. Detected by chemiluminescence.