

Datasheet for ABIN239803
anti-MARK1 antibody (N-Term)[Go to Product page](#)

2 Images

Overview

Quantity:	50 µg
Target:	MARK1
Binding Specificity:	N-Term
Reactivity:	Human, Monkey, Rabbit, Horse
Host:	Rabbit
Clonality:	Polyclonal
Conjugate:	This MARK1 antibody is un-conjugated
Application:	Immunohistochemistry (IHC), Immunohistochemistry (Paraffin-embedded Sections) (IHC (p))

Product Details

Brand:	IHC-plus™
Immunogen:	Synthetic 19 amino acid peptide from N-terminus of human MARK1. Percent identity with other species by BLAST analysis: Human, Gibbon, Monkey, Marmoset, Horse, Rabbit (100%), Dog, Bovine, Panda (95%), Rat, Hamster, Elephant, Platypus (89%), Mouse, Opossum, Turkey, Chicken, Lizard (84%). Type of Immunogen: Synthetic peptide
Specificity:	Human MARK1. BLAST analysis of the peptide immunogen showed no homology with other human proteins.
Predicted Reactivity:	Percent identity with other species by BLAST analysis: Human, Gibbon, Monkey, Marmoset, Horse, Rabbit (100%) Dog, Bovine, Panda (95%) Rat, Hamster, Elephant, Platypus (89%) Mouse,

Product Details

Opossum, Turkey, Chicken, Lizard (84%).

Purification: Immunoaffinity purified

Target Details

Target: MARK1

Alternative Name: MARK1 / MARK ([MARK1 Products](#))

Background: Name/Gene ID: MARK1
Subfamily: MARK
Family: Protein Kinase

Synonyms: MARK1, KIAA1477, Par1c, PAR1 homolog c, MARK, Par-1c

Gene ID: 4139

Pathways: [SARS-CoV-2 Protein Interactome](#), [The Global Phosphorylation Landscape of SARS-CoV-2 Infection](#)

Application Details

Application Notes: Approved: IHC, IHC-P (2.5 µg/mL)

Usage: Immunohistochemistry: This antibody was validated for use in immunohistochemistry on a panel of 21 formalin-fixed, paraffin-embedded (FFPE) human tissues after heat induced antigen retrieval in pH 6.0 citrate buffer. After incubation with the primary antibody, slides were incubated with biotinylated secondary antibody, followed by alkaline phosphatase-streptavidin and chromogen. The stained slides were evaluated by a pathologist to confirm staining specificity. The optimal working concentration for this antibody was determined to be 2.5 µg/mL.

Comment: Target Species of Antibody: Human

Restrictions: For Research Use only

Handling

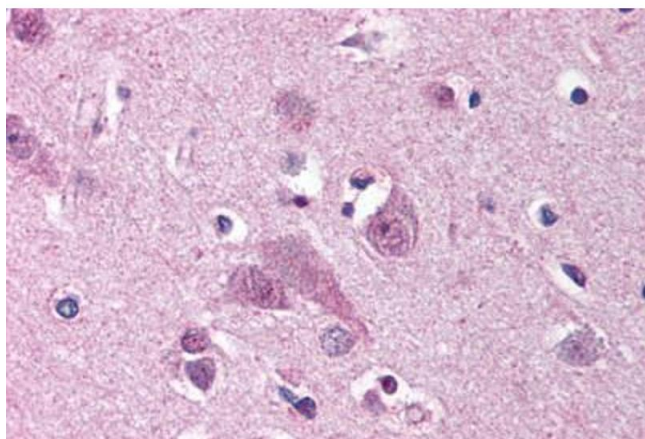
Format: Liquid

Concentration: Lot specific

Handling

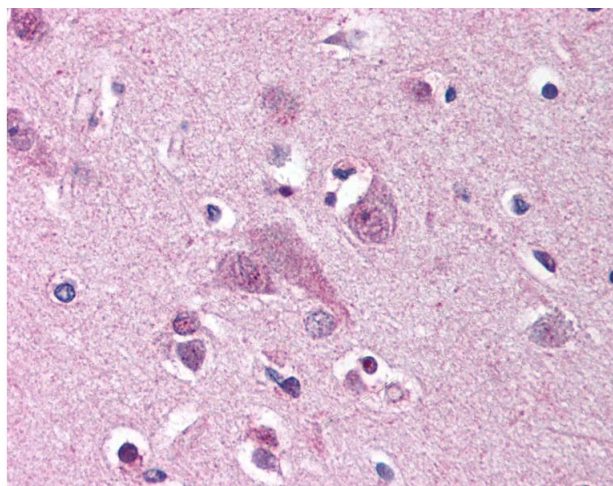
Buffer:	PBS, less than 0.1 % sodium azide.
Preservative:	Sodium azide
Precaution of Use:	This product contains Sodium azide: a POISONOUS AND HAZARDOUS SUBSTANCE which should be handled by trained staff only.
Storage:	4 °C, -20 °C
Storage Comment:	Aliquot and store undiluted at -20°C or below for up to 1 year. Can be stored undiluted at 4°C for up to 1 month. Avoid freeze-thaw cycles.
Expiry Date:	12 months

Images



Immunohistochemistry (Paraffin-embedded Sections)

Image 1. Human Brain, Cortex (formalin-fixed, paraffin-embedded) stained with MARK1 antibody ABIN239803 at 2.5 ug/ml followed by biotinylated goat anti-rabbit IgG secondary antibody ABIN481713, alkaline phosphatase-streptavidin and chromogen.



Immunohistochemistry

Image 2. Anti-MARK1 antibody IHC of human brain, cortex. Immunohistochemistry of formalin-fixed, paraffin-embedded tissue after heat-induced antigen retrieval.