

Datasheet for ABIN239821
anti-SLC9A3R1 antibody

2 Images

[Go to Product page](#)

Overview

Quantity:	0.05 mg
Target:	SLC9A3R1
Reactivity:	Human
Host:	Mouse
Clonality:	Monoclonal
Conjugate:	This SLC9A3R1 antibody is un-conjugated
Application:	Western Blotting (WB), Immunoprecipitation (IP), Immunohistochemistry (Paraffin-embedded Sections) (IHC (p)), Immunohistochemistry (IHC), Blocking Antibody (Inhibition)

Product Details

Brand:	IHC-plus™
Immunogen:	Recombinant human SLC9A3R1 / NHERF1. Type of Immunogen: Recombinant protein
Clone:	EBP-10
Isotype:	IgG2b
Specificity:	Bacterially produced recombinant full-length human NHERF
Purification:	Protein A purified

Target Details

Target:	SLC9A3R1
---------	----------

Target Details

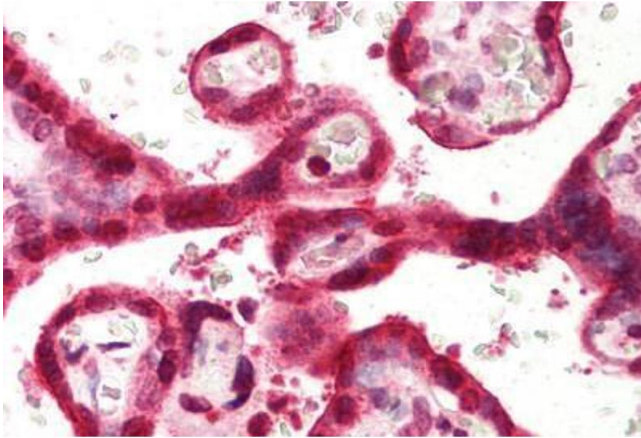
Alternative Name:	SLC9A3R1 / NHERF1 / EBP50 (SLC9A3R1 Products)
Background:	Name/Gene ID: SLC9A3R1 Subfamily: Monovalent cation:proton antiporter-1 Family: Transporter Synonyms: SLC9A3R1, EBP50, NPHLOP2, NHERF, NHERF-1, NHERF1
Gene ID:	9368
UniProt:	O14745
Pathways:	Proton Transport , Platelet-derived growth Factor Receptor Signaling , Negative Regulation of Transporter Activity , SARS-CoV-2 Protein Interactome

Application Details

Application Notes:	Approved: IHC, IHC-P (5 µg/mL), Inhb, IP (2 µg/mL), WB (2 µg/mL) Usage: Immunohistochemistry: This antibody was validated for use in immunohistochemistry on a panel of 21 formalin-fixed, paraffin-embedded (FFPE) human tissues after heat induced antigen retrieval in pH 6.0 citrate buffer. After incubation with the primary antibody,
Comment:	Target Species of Antibody: Human
Restrictions:	For Research Use only

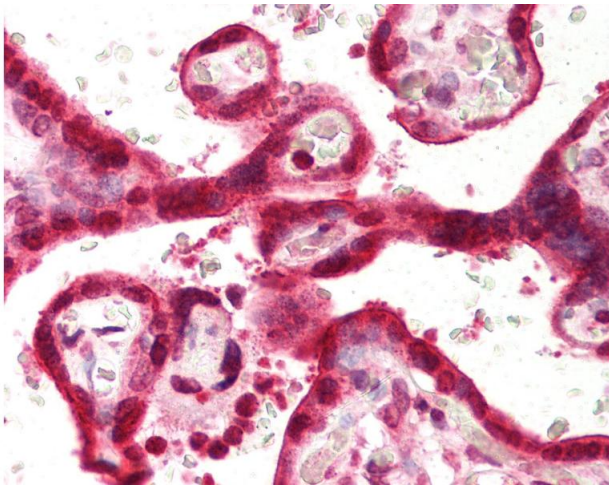
Handling

Format:	Liquid
Concentration:	Lot specific
Buffer:	PBS, 15 mM sodium azide, approx, pH 7.4.
Preservative:	Sodium azide
Precaution of Use:	This product contains Sodium azide: a POISONOUS AND HAZARDOUS SUBSTANCE which should be handled by trained staff only.
Handling Advice:	avoid freeze thaw cycles.
Storage:	4 °C,-20 °C
Storage Comment:	Short term 4°C, long term aliquot and store at -20°C, avoid freeze-thaw cycles.



Immunohistochemistry (Paraffin-embedded Sections)

Image 1. Human Placenta (formalin-fixed, paraffin-embedded) stained with SLC9A3R1 antibody ABIN239821 at 5 ug/ml followed by biotinylated anti-mouse IgG secondary antibody ABIN481714, alkaline phosphatase-streptavidin and chromogen.



Immunohistochemistry

Image 2. Anti-SLC9A3R1 / NHERF1 antibody IHC of human placenta. Immunohistochemistry of formalin-fixed, paraffin-embedded tissue after heat-induced antigen retrieval. Antibody concentration 5 ug/ml.