



[Go to Product page](#)

Datasheet for ABIN239823  
**anti-LAT2 antibody (AA 196-212)**

2 Images

Overview

Quantity:	50 µg
Target:	LAT2
Binding Specificity:	AA 196-212
Reactivity:	Human
Host:	Mouse
Clonality:	Monoclonal
Conjugate:	This LAT2 antibody is un-conjugated
Application:	Western Blotting (WB), Immunoprecipitation (IP), Immunohistochemistry (IHC), Immunohistochemistry (Paraffin-embedded Sections) (IHC (p)), Blocking Antibody (Inhibition)

Product Details

Brand:	IHC-plus™
Immunogen:	Synthetic peptide from human LAT2. Type of Immunogen: Synthetic peptide
Clone:	NAP-03
Isotype:	IgG2a
Specificity:	Peptide corresponding to aa 196-212 of human NTAL coupled to KLH
Purification:	Protein A purified

## Target Details

---

Target:	LAT2
Alternative Name:	LAT2 / NTAL ( <a href="#">LAT2 Products</a> )
Background:	Name/Gene ID: LAT2  Synonyms: LAT2, HSPC046, Non-T-cell activation linker, NTAL, LAB, WBSCR15, WBS15, WBSCR5, WSCR5
Gene ID:	7462
UniProt:	<a href="#">Q9GZY6</a>
Pathways:	<a href="#">Fc-epsilon Receptor Signaling Pathway</a> , <a href="#">BCR Signaling</a>

## Application Details

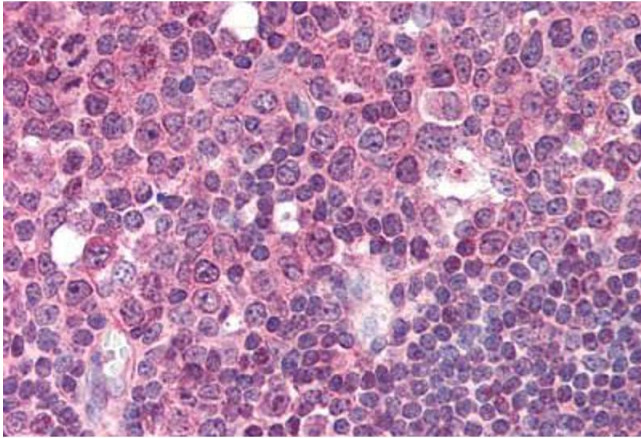
---

Application Notes:	Approved: IHC, IHC-P (5 µg/mL), Inhb, IP (1 - 2 µg/mL), WB (1 - 2 µg/mL)  Usage: Immunohistochemistry: This antibody was validated for use in immunohistochemistry on a panel of 21 formalin-fixed, paraffin-embedded (FFPE) human tissues after heat induced antigen retrieval in pH 6.0 citrate buffer. After incubation with the primary antibody,
Comment:	Target Species of Antibody: Human
Restrictions:	For Research Use only

## Handling

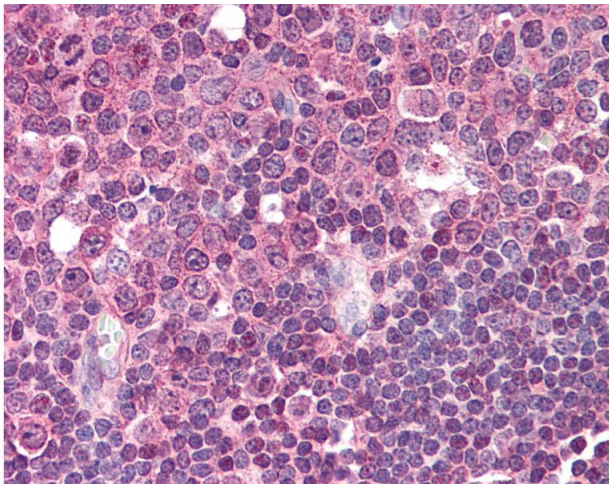
---

Format:	Liquid
Concentration:	Lot specific
Buffer:	PBS, 15 mM sodium azide, approx, pH 7.4.
Preservative:	Sodium azide
Precaution of Use:	This product contains Sodium azide: a POISONOUS AND HAZARDOUS SUBSTANCE which should be handled by trained staff only.
Handling Advice:	avoid freeze thaw cycles.
Storage:	4 °C,-20 °C
Storage Comment:	Short term 4°C, long term aliquot and store at -20°C, avoid freeze-thaw cycles.



#### Immunohistochemistry (Paraffin-embedded Sections)

**Image 1.** Human Tonsil (formalin-fixed, paraffin-embedded) stained with LAT2 antibody ABIN239823 at 5 ug/ml followed by biotinylated anti-mouse IgG secondary antibody ABIN481714, alkaline phosphatase-streptavidin and chromogen.



#### Immunohistochemistry

**Image 2.** Anti-LAT2 antibody IHC of human tonsil. Immunohistochemistry of formalin-fixed, paraffin-embedded tissue after heat-induced antigen retrieval. Antibody concentration 5 ug/ml.