

Datasheet for ABIN239828
anti-STIM1 antibody (C-Term)[Go to Product page](#)

2 Images

Overview

Quantity:	0.05 mg
Target:	STIM1
Binding Specificity:	C-Term
Reactivity:	Human, Rat, Mouse
Host:	Mouse
Clonality:	Monoclonal
Conjugate:	This STIM1 antibody is un-conjugated
Application:	Western Blotting (WB), Immunohistochemistry (IHC), Immunohistochemistry (Paraffin-embedded Sections) (IHC (p)), Immunoprecipitation (IP), Immunocytochemistry (ICC), Blocking Antibody (Inhibition)

Product Details

Brand:	IHC-plus™
Immunogen:	Synthetic peptide from human STIM1. Type of Immunogen: Synthetic peptide
Clone:	CDN3H4
Isotype:	IgG1
Specificity:	Synthesized peptide (C-terminal cytoplasmic part of STIM1).
Purification:	Protein A purified

Target Details

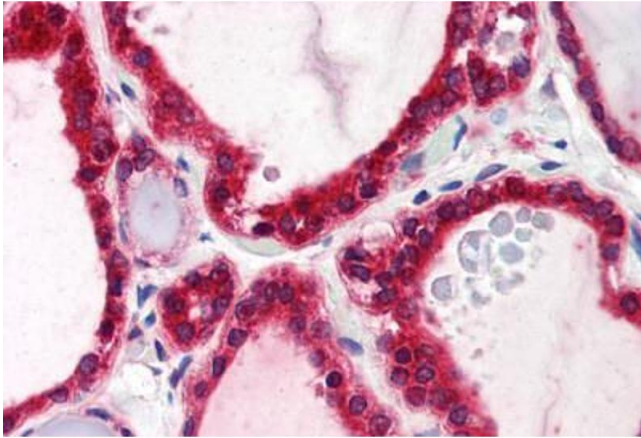
Target:	STIM1
Alternative Name:	GOK / STIM1 (STIM1 Products)
Background:	Name/Gene ID: STIM1 Synonyms: STIM1, D11S4896E, Stromal interaction molecule 1, GOK, STIM1L
Gene ID:	6786
UniProt:	Q13586
Pathways:	TCR Signaling , BCR Signaling

Application Details

Application Notes:	Approved: ICC, IHC, IHC-P (5 µg/mL), Inhb, IP, WB (1 µg/mL) Usage: Immunohistochemistry: This antibody was validated for use in immunohistochemistry on a panel of 21 formalin-fixed, paraffin-embedded (FFPE) human tissues after heat induced antigen retrieval in pH 6.0 citrate buffer. After incubation with the primary antibody,
Comment:	Target Species of Antibody: Human
Restrictions:	For Research Use only

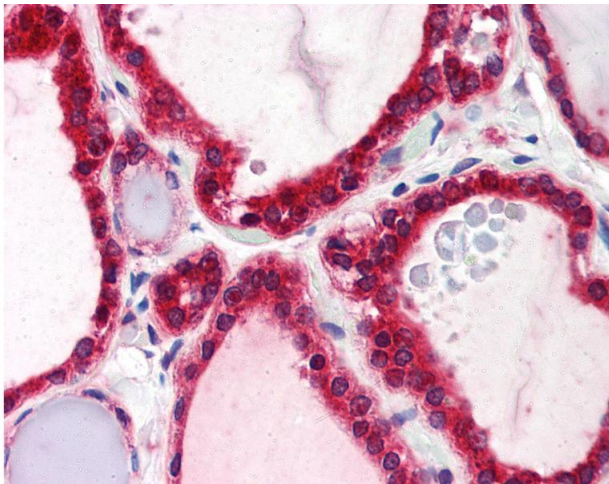
Handling

Format:	Liquid
Concentration:	Lot specific
Buffer:	PBS, 15 mM sodium azide, approx, pH 7.4.
Preservative:	Sodium azide
Precaution of Use:	This product contains Sodium azide: a POISONOUS AND HAZARDOUS SUBSTANCE which should be handled by trained staff only.
Handling Advice:	avoid freeze thaw cycles.
Storage:	4 °C
Storage Comment:	Store at 4-8°C. Do not freeze.



Immunohistochemistry (Paraffin-embedded Sections)

Image 1. Human Thyroid (formalin-fixed, paraffin-embedded) stained with STIM1 antibody ABIN239828 at 5 ug/ml followed by biotinylated anti-mouse IgG secondary antibody ABIN481714, alkaline phosphatase-streptavidin and chromogen.



Immunohistochemistry

Image 2. Anti-STIM1 antibody IHC of human thyroid. Immunohistochemistry of formalin-fixed, paraffin-embedded tissue after heat-induced antigen retrieval. Antibody concentration 5 ug/ml.