

Datasheet for ABIN239853
anti-SUPT16H antibody



[Go to Product page](#)

2 Images

Overview

Quantity:	50 µg
Target:	SUPT16H
Reactivity:	Human
Host:	Mouse
Clonality:	Monoclonal
Conjugate:	This SUPT16H antibody is un-conjugated
Application:	Western Blotting (WB), Immunohistochemistry (IHC), Immunohistochemistry (Paraffin-embedded Sections) (IHC (p))

Product Details

Brand:	IHC-plus™
Immunogen:	Recombinant human SUPT16H (full length).
Clone:	8D2
Isotype:	IgG2a
Specificity:	Human, weakly reacts with mouse Spt16
Purification:	Affinity purified

Target Details

Target:	SUPT16H
Alternative Name:	SUPT16H / FACTP140 (SUPT16H Products)

Target Details

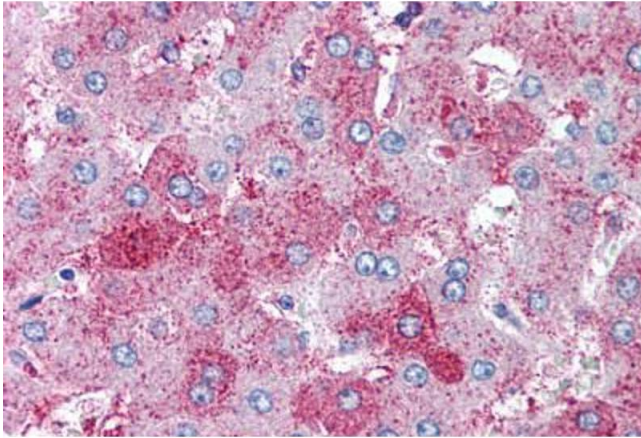
Background:	Name/Gene ID: SUPT16H Synonyms: SUPT16H, CDC68, FACT140, FACT, FACT complex subunit SPT16, FACT 140 kDa subunit, HSPT16, SPT16/CDC68, FACTP140
Gene ID:	11198
UniProt:	Q9Y5B9
Pathways:	Chromatin Binding

Application Details

Application Notes:	Approved: IHC, IHC-P (10 µg/mL), WB Usage: Immunohistochemistry: This antibody was validated for use in immunohistochemistry on a panel of 21 formalin-fixed, paraffin-embedded (FFPE) human tissues after heat induced antigen retrieval in pH 6.0 citrate buffer. After incubation with the primary antibody, slides were incubated with biotinylated secondary antibody, followed by alkaline phosphatase-streptavidin and chromogen. The stained slides were evaluated by a pathologist to confirm staining specificity. The optimal working concentration for this antibody was determined to be 10 µg/mL.
Comment:	Target Species of Antibody: Human
Restrictions:	For Research Use only

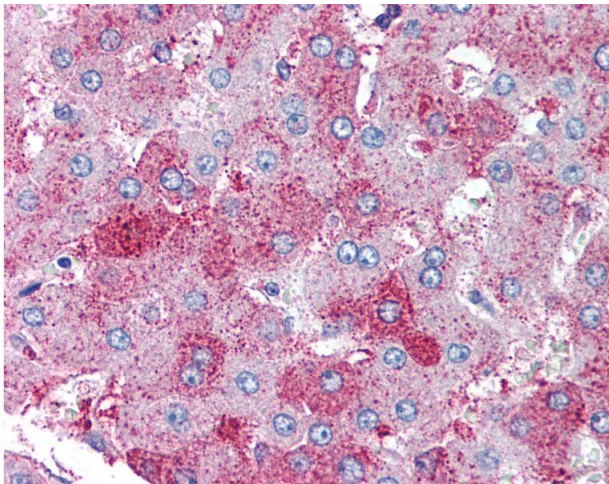
Handling

Format:	Liquid
Concentration:	Lot specific
Buffer:	Phosphate-buffered solution, pH 7.2, 0.09 % sodium azide. The.
Preservative:	Sodium azide
Precaution of Use:	This product contains Sodium azide: a POISONOUS AND HAZARDOUS SUBSTANCE which should be handled by trained staff only.
Handling Advice:	Do not freeze.
Storage:	4 °C
Storage Comment:	Store at 4°C. Do not freeze.



Immunohistochemistry (Paraffin-embedded Sections)

Image 1. Human Liver (formalin-fixed, paraffin-embedded) stained with SUPT16H antibody ABIN239853 at 10 ug/ml followed by biotinylated anti-mouse IgG secondary antibody ABIN481714, alkaline phosphatase-streptavidin and chromogen.



Immunohistochemistry

Image 2. Anti-SUPT16H antibody IHC of human liver. Immunohistochemistry of formalin-fixed, paraffin-embedded tissue after heat-induced antigen retrieval. Antibody concentration 10 ug/ml.