

Datasheet for ABIN239857
anti-TPX2 antibody (AA 1-220)



[Go to Product page](#)

2 Images

Overview

Quantity:	50 µg
Target:	TPX2
Binding Specificity:	AA 1-220
Reactivity:	Human
Host:	Mouse
Clonality:	Monoclonal
Conjugate:	This TPX2 antibody is un-conjugated
Application:	Western Blotting (WB), Immunohistochemistry (IHC), Immunohistochemistry (Paraffin-embedded Sections) (IHC (p))

Product Details

Brand:	IHC-plus™
Immunogen:	Recombinant human TPX2. Type of Immunogen: Recombinant protein
Clone:	18D5
Isotype:	IgG1
Specificity:	Amino Acid: 1-220 of human TPX2
Purification:	Affinity purified

Target Details

Target:	TPX2
Alternative Name:	TPX2 (TPX2 Products)
Background:	Name/Gene ID: TPX2 Synonyms: TPX2, C20orf2, DIL-2, DIL2, HCA519, GD:C20orf1, p100, Protein fls353, Targeting protein for Xklp2, C20orf1, FLS353, HCTP4, REPP86
Gene ID:	22974
UniProt:	Q9ULW0

Application Details

Application Notes:	Approved: IHC, IHC-P (10 µg/mL), WB Usage: Immunohistochemistry: This antibody was validated for use in immunohistochemistry on a panel of 21 formalin-fixed, paraffin-embedded (FFPE) human tissues after heat induced antigen retrieval in pH 6.0 citrate buffer. After incubation with the primary antibody, slides were incubated with biotinylated secondary antibody, followed by alkaline phosphatase-streptavidin and chromogen. The stained slides were evaluated by a pathologist to confirm staining specificity. The optimal working concentration for this antibody was determined to be 10 µg/mL.
Comment:	Target Species of Antibody: Human
Restrictions:	For Research Use only

Handling

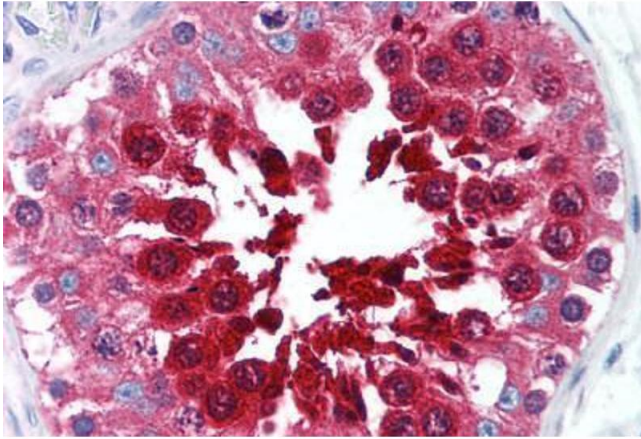
Format:	Liquid
Concentration:	Lot specific
Buffer:	Phosphate-buffered solution, pH 7.2, 0.09 % sodium azide. Sourced from tissue culture supernatant.
Preservative:	Sodium azide
Precaution of Use:	This product contains Sodium azide: a POISONOUS AND HAZARDOUS SUBSTANCE which should be handled by trained staff only.
Handling Advice:	Aliquot to Avoid freeze/thaw cycles.

Handling

Storage: -20 °C

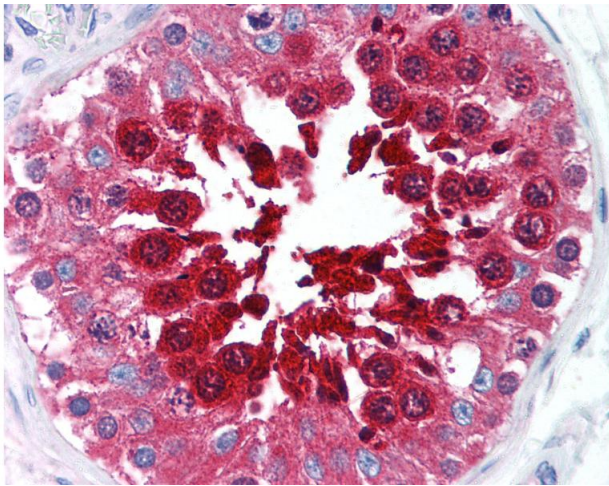
Storage Comment: Store at -20°C. Aliquot to avoid freeze/thaw cycles.

Images



Immunohistochemistry (Paraffin-embedded Sections)

Image 1. Human Testis (formalin-fixed, paraffin-embedded) stained with TPX2 antibody ABIN239857 at 10 ug/ml followed by biotinylated anti-mouse IgG secondary antibody ABIN481714, alkaline phosphatase-streptavidin and chromogen.



Immunohistochemistry

Image 2. Anti-TPX2 antibody IHC of human testis. Immunohistochemistry of formalin-fixed, paraffin-embedded tissue after heat-induced antigen retrieval. Antibody concentration 10 ug/ml.