

Datasheet for ABIN2423403

anti-ETV7 antibody

3 Images

[Go to Product page](#)

Overview

Quantity:	200 µL
Target:	ETV7
Reactivity:	Human, Mouse, Rat
Host:	Rabbit
Clonality:	Polyclonal
Conjugate:	This ETV7 antibody is un-conjugated
Application:	Western Blotting (WB), ELISA, Immunohistochemistry (IHC)

Product Details

Immunogen:	Recombinant protein of human ETV7
Isotype:	IgG
Purification:	Antigen affinity purification

Target Details

Target:	ETV7
Alternative Name:	ETV7 (ETV7 Products)
Background:	The protein encoded by this gene belongs to the ETS family of transcription factors, which is a large group of evolutionarily conserved transcriptional regulators that play an important role in a variety of cellular processes throughout development and differentiation, and are involved in oncogenesis as well. This protein is predominantly expressed in hematopoietic tissues. Several alternatively spliced transcript variants encoding different isoforms have been described for

Target Details

	this gene
	Synonyms: TEL2, TELB, TEL-2
Molecular Weight:	Calculated MW: 39 kDa

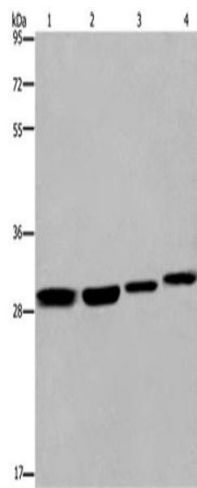
Application Details

Application Notes:	Optimal working dilution should be determined by the investigator.
Restrictions:	For Research Use only

Handling

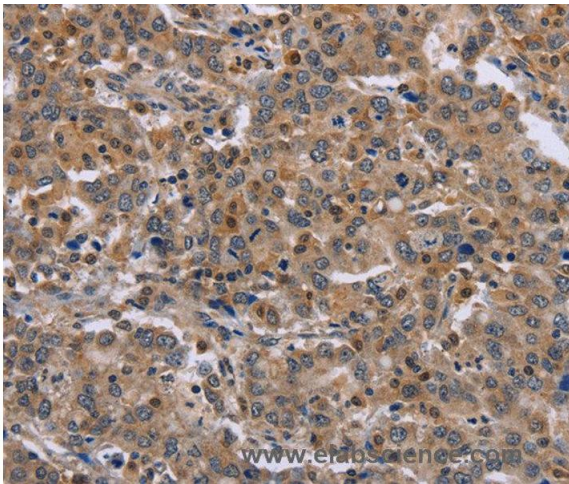
Format:	Liquid
Handling Advice:	Avoid freeze / thaw cycles.
Storage:	-20 °C/-80 °C
Storage Comment:	Store at -20°C (regular) and -80°C (long term).

Images



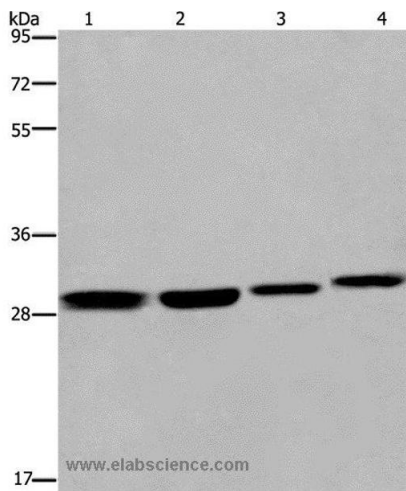
Western Blotting

Image 1.



Immunohistochemistry

Image 2. Immunohistochemistry of Human liver cancer using ETV7 Polyclonal Antibody at dilution of 1:30



Western Blotting

Image 3. Western blot analysis of 293T and LoVo cell, mouse skin tissue and A172 cell, using ETV7 Polyclonal Antibody at dilution of 1:600