



[Go to Product page](#)

Datasheet for ABIN2426541

anti-AKAP6 antibody

2 Images

Overview

Quantity:	200 µL
Target:	AKAP6 (Akap6)
Reactivity:	Human, Mouse, Rat
Host:	Rabbit
Clonality:	Polyclonal
Conjugate:	This AKAP6 antibody is un-conjugated
Application:	ELISA, Immunohistochemistry (IHC)

Product Details

Immunogen:	Synthetic peptide of human AKAP6
Isotype:	IgG
Purification:	Antigen affinity purification

Target Details

Target:	AKAP6 (Akap6)
Alternative Name:	AKAP6 (Akap6 Products)
Background:	The A-kinase anchor proteins (AKAPs) are a group of structurally diverse proteins, which have the common function of binding to the regulatory subunit of protein kinase A (PKA) and confining the holoenzyme to discrete locations within the cell. This gene encodes a member of the AKAP family. The encoded protein is highly expressed in various brain regions and cardiac and skeletal muscle. It is specifically localized to the sarcoplasmic reticulum and nuclear

Target Details

membrane, and is involved in anchoring PKA to the nuclear membrane or sarcoplasmic reticulum.

Synonyms: ADAP6, PRKA6, mAKAP, ADAP100, AKAP100

Pathways: [cAMP Metabolic Process](#), [Regulation of Muscle Cell Differentiation](#)

Application Details

Application Notes: Optimal working dilution should be determined by the investigator.

Restrictions: For Research Use only

Handling

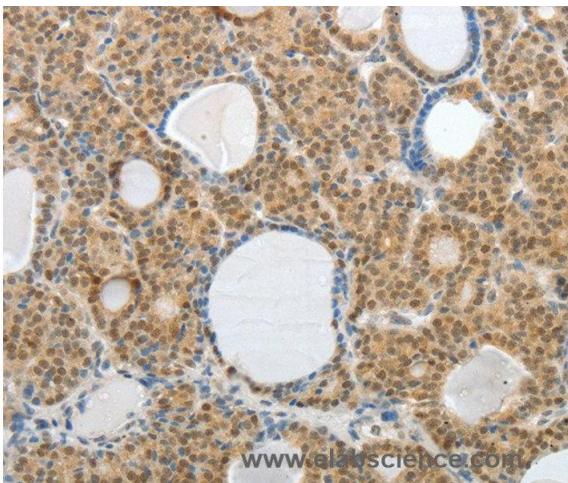
Format: Liquid

Handling Advice: Avoid freeze / thaw cycles.

Storage: -20 °C/-80 °C

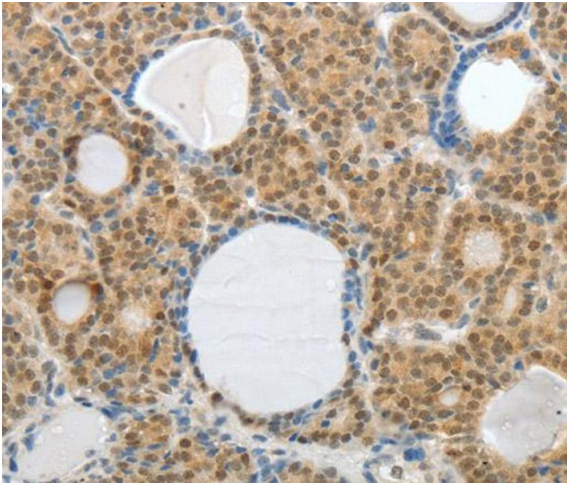
Storage Comment: Store at -20°C (regular) and -80°C (long term).

Images



Immunohistochemistry

Image 1. Immunohistochemistry of Human thyroid cancer using AKAP6 Polyclonal Antibody at dilution of 1:30



Immunohistochemistry

Image 2.