

Datasheet for ABIN2427251

anti-SLC5A9 antibody[Go to Product page](#)**2** Images

Overview

| | |
|--------------|---------------------------------------|
| Quantity: | 200 µL |
| Target: | SLC5A9 |
| Reactivity: | Human, Mouse, Rat |
| Host: | Rabbit |
| Clonality: | Polyclonal |
| Conjugate: | This SLC5A9 antibody is un-conjugated |
| Application: | Western Blotting (WB), ELISA |

Product Details

| | |
|---------------|-----------------------------------|
| Immunogen: | Synthetic peptide of human SLC5A9 |
| Isotype: | IgG |
| Purification: | Antigen affinity purification |

Target Details

| | |
|-------------------|--|
| Target: | SLC5A9 |
| Alternative Name: | SLC5A9 (SLC5A9 Products) |
| Background: | <p>SGLT-4 (sodium/glucose cotransporter 4), also known as SLC5A9 (solute carrier family 5 member 9), is a 681 amino acid multi-pass membrane protein that participates in the sodium-dependent transport of D-fructose, D-mannose and D-glucose. A member of the sodium:solute symporter (SSF) family, SGLT-4 is found in small intestine and kidney.</p> <p>Synonyms: SGLT4</p> |

Target Details

Molecular Weight: Calculated MW: 74 kDa

Application Details

Application Notes: Optimal working dilution should be determined by the investigator.

Restrictions: For Research Use only

Handling

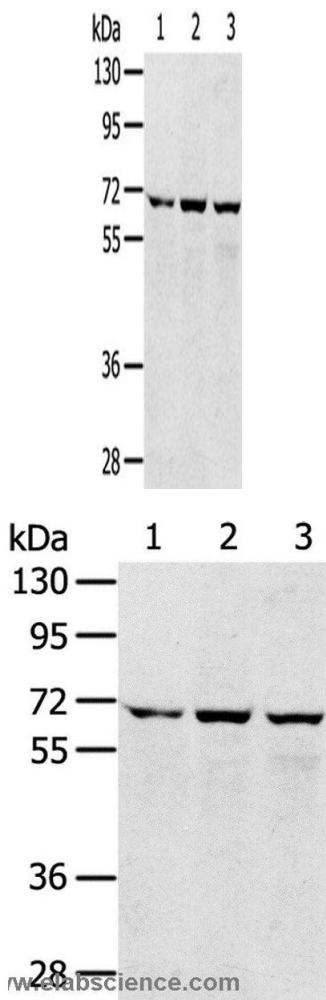
Format: Liquid

Handling Advice: Avoid freeze / thaw cycles.

Storage: -20 °C/-80 °C

Storage Comment: Store at -20°C (regular) and -80°C (long term).

Images



Western Blotting

Image 1.

Western Blotting

Image 2. Western blot analysis of 293T, hepg2 and A172 cell, using SLC5A9 Polyclonal Antibody at dilution of 1:300