

Datasheet for ABIN2427419

**anti-VMP1 antibody****2** Images[Go to Product page](#)

## Overview

Quantity:	200 µL
Target:	VMP1
Reactivity:	Human, Mouse, Rat
Host:	Rabbit
Clonality:	Polyclonal
Conjugate:	This VMP1 antibody is un-conjugated
Application:	ELISA, Immunohistochemistry (IHC)

## Product Details

Immunogen:	Synthetic peptide of human VMP1
Isotype:	IgG
Purification:	Antigen affinity purification

## Target Details

Target:	VMP1
Alternative Name:	VMP1 ( <a href="#">VMP1 Products</a> )
Background:	VMP1 is a stress-induced protein that, when overexpressed, promotes formation of intracellular vacuoles followed by cell death. May be involved in the cytoplasmic vacuolization of acinar cells during the early stage of acute pancreatitis. VMP1 is a transmembrane protein that co-localizes with LC3, a marker of the autophagosomes. It interacts with beclin-1, a mammalian autophagy initiator, through the VMP1-Atg domain, which is essential for autophagosome formation.

## Target Details

Synonyms: EPG3, TANGO5, TMEM49

## Application Details

Application Notes: Optimal working dilution should be determined by the investigator.

Restrictions: For Research Use only

## Handling

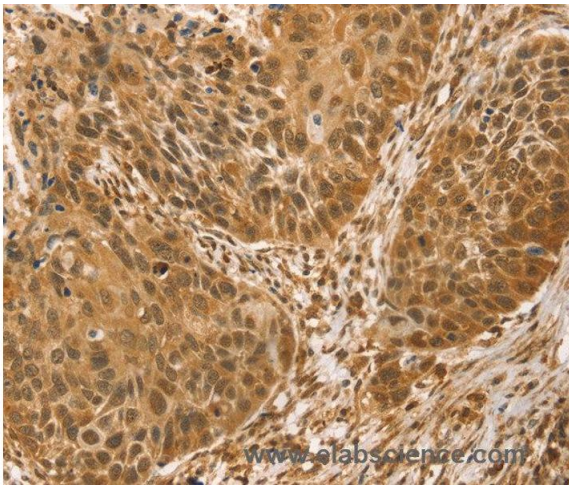
Format: Liquid

Handling Advice: Avoid freeze / thaw cycles.

Storage: -20 °C/-80 °C

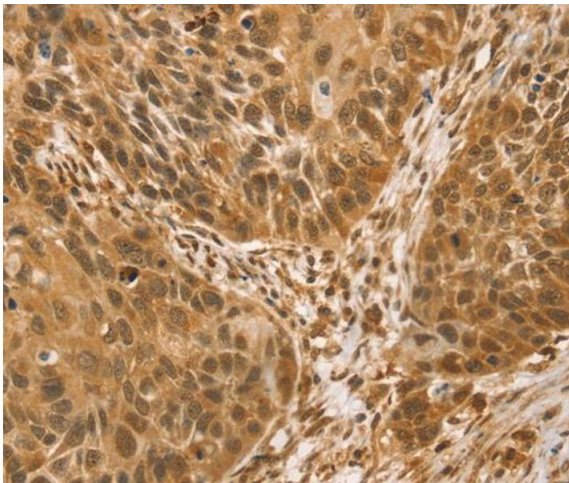
Storage Comment: Store at -20°C (regular) and -80°C (long term).

## Images



### Immunohistochemistry

**Image 1.** Immunohistochemistry of Human esophagus cancer using VMP1 Polyclonal Antibody at dilution of 1:30



### Immunohistochemistry

**Image 2.**