

Datasheet for ABIN2428193

anti-GRK4 antibody**3** Images[Go to Product page](#)

Overview

Quantity:	200 µL
Target:	GRK4
Reactivity:	Human, Mouse, Rat
Host:	Rabbit
Clonality:	Polyclonal
Conjugate:	This GRK4 antibody is un-conjugated
Application:	Western Blotting (WB), ELISA, Immunohistochemistry (IHC)

Product Details

Immunogen:	Recombinant protein of human GRK4
Isotype:	IgG
Purification:	Antigen affinity purification

Target Details

Target:	GRK4
Alternative Name:	GRK4 (GRK4 Products)
Background:	This gene encodes a member of the guanine nucleotide-binding protein (G protein)-coupled receptor kinase subfamily of the Ser/Thr protein kinase family. The protein phosphorylates the activated forms of G protein-coupled receptors thus initiating its deactivation. This gene has been linked to both genetic and acquired hypertension. Specifically phosphorylates the activated forms of G protein-coupled receptors. GRK4-alpha can phosphorylate rhodopsin and

Target Details

its activity is inhibited by calmodulin, the other three isoforms do not phosphorylate rhodopsin and do not interact with calmodulin. GRK4-alpha and GRK4-gamma phosphorylate DRD3. Phosphorylates ADRB2.
Synonyms: IT11, GPRK4, GRK4a, GPRK2L

Molecular Weight:	Calculated MW: 67 kDa
Pathways:	Myometrial Relaxation and Contraction , Regulation of G-Protein Coupled Receptor Protein Signaling

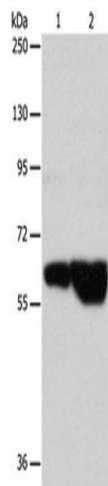
Application Details

Application Notes:	Optimal working dilution should be determined by the investigator.
Restrictions:	For Research Use only

Handling

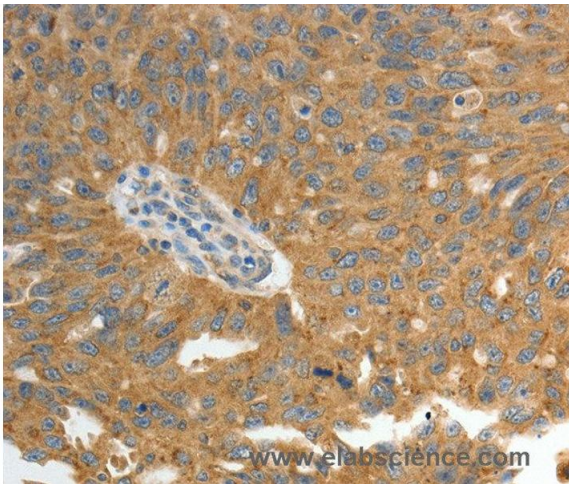
Format:	Liquid
Handling Advice:	Avoid freeze / thaw cycles.
Storage:	-20 °C/-80 °C
Storage Comment:	Store at -20°C (regular) and -80°C (long term).

Images



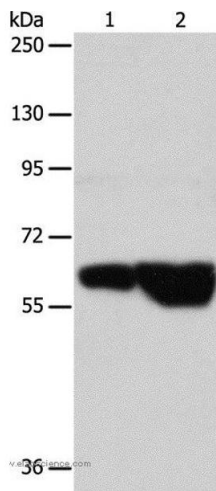
Western Blotting

Image 1.



Immunohistochemistry

Image 2. Immunohistochemistry of Human ovarian cancer using GRK4 Polyclonal Antibody at dilution of 1:40



Western Blotting

Image 3. Western blot analysis of Hela and Jurkat cell, using GRK4 Polyclonal Antibody at dilution of 1:700