



[Go to Product page](#)

Datasheet for ABIN2428455

anti-NAIF1 antibody

3 Images

Overview

Quantity:	200 µL
Target:	NAIF1
Reactivity:	Human, Mouse, Rat
Host:	Rabbit
Clonality:	Polyclonal
Conjugate:	This NAIF1 antibody is un-conjugated
Application:	ELISA, Western Blotting (WB), Immunohistochemistry (IHC)

Product Details

Immunogen:	Recombinant protein of human NAIF1
Isotype:	IgG
Purification:	Antigen affinity purification

Target Details

Target:	NAIF1
Alternative Name:	NAIF1 (NAIF1 Products)
Background:	Human NAIF1 is located on chromosome 9q34.11 and encodes 327 amino acids with a homeodomain-like region and two nuclear localization signals at its N-terminal region. NAIF1 is conserved across diverse species, including human, mouse, crab-eating macaque, dog, chicken and frog, and shares no obvious homology to any known genes or proteins. NAIF1 was predominantly localized in the nucleus. Overexpression of NAIF1 inhibited cell growth and

Target Details

induced apoptosis. Furthermore, NAIF1 transfection caused both decreases in mitochondrial membrane potential and caspase-3 activation. In summary, NAIF1 is a nuclear protein that induces apoptosis when overexpressed.

Synonyms: C9orf90, bA379C10.2, RP11-379C10.2

Molecular Weight: Calculated MW: 35 kDa

Application Details

Application Notes: Optimal working dilution should be determined by the investigator.

Restrictions: For Research Use only

Handling

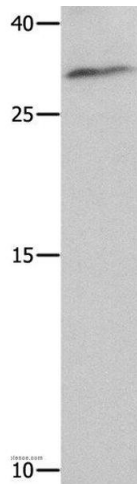
Format: Liquid

Handling Advice: Avoid freeze / thaw cycles.

Storage: -20 °C/-80 °C

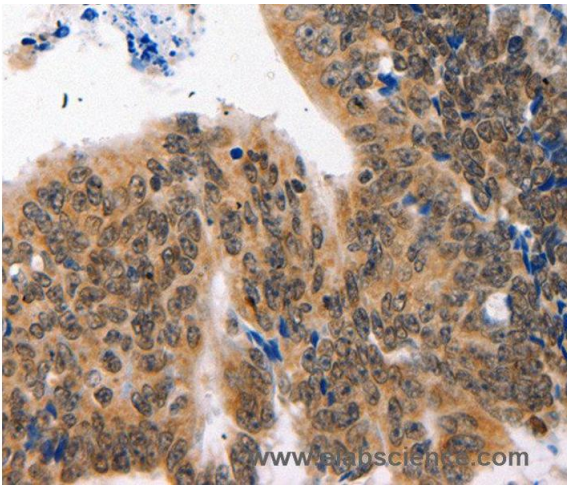
Storage Comment: Store at -20°C (regular) and -80°C (long term).

Images



Western Blotting

Image 1. Western blot analysis of 293T cell , using NAIF1 Polyclonal Antibody at dilution of 1:750



Immunohistochemistry

Image 2. Immunohistochemistry of Human colon cancer using NAIF1 Polyclonal Antibody at dilution of 1:60



Western Blotting

Image 3.