



[Go to Product page](#)

Datasheet for ABIN2429199

## anti-ATG10 antibody

### 2 Images

#### Overview

Quantity:	200 µL
Target:	ATG10
Reactivity:	Human, Mouse, Rat
Host:	Rabbit
Clonality:	Polyclonal
Conjugate:	This ATG10 antibody is un-conjugated
Application:	Western Blotting (WB), ELISA, Immunohistochemistry (IHC)

#### Product Details

Immunogen:	Recombinant protein of human ATG10
Isotype:	IgG
Purification:	Antigen affinity purification

#### Target Details

Target:	ATG10
Alternative Name:	ATG10 ( <a href="#">ATG10 Products</a> )
Background:	Autophagy is a process for the bulk degradation of cytosolic compartments by lysosomes. ATG10 is an E2-like enzyme involved in 2 ubiquitin-like modifications essential for autophagosome formation: ATG12 (MIM 609608)-ATG5 (MIM 604261) conjugation and modification of a soluble form of MAP-LC3 (MAP1LC3A, MIM 601242), a homolog of yeast Apg8, to a membrane-bound form.

## Target Details

Synonyms: APG10, APG10L, pp12616

Molecular Weight: Calculated MW: 25 kDa

Pathways: [ER-Nucleus Signaling](#), [Autophagy](#)

## Application Details

Application Notes: Optimal working dilution should be determined by the investigator.

Restrictions: For Research Use only

## Handling

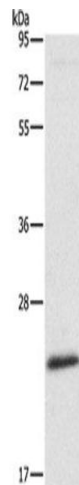
Format: Liquid

Handling Advice: Avoid freeze / thaw cycles.

Storage: -20 °C/-80 °C

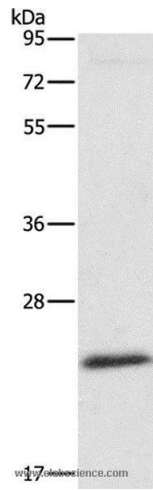
Storage Comment: Store at -20°C (regular) and -80°C (long term).

## Images



### Western Blotting

Image 1.



### Western Blotting

**Image 2.** Western blot analysis of Mouse liver tissue, using ATG10 Polyclonal Antibody at dilution of 1:500