

Datasheet for ABIN2433343
anti-MAGE-Like 2 antibody[Go to Product page](#)

2 Images

Overview

Quantity:	200 µL
Target:	MAGE-Like 2 (MAGEL2)
Reactivity:	Human, Mouse, Rat
Host:	Rabbit
Clonality:	Polyclonal
Conjugate:	This MAGE-Like 2 antibody is un-conjugated
Application:	ELISA, Western Blotting (WB)

Product Details

Immunogen:	Synthetic peptide of human MAGEL2
Isotype:	IgG
Purification:	Antigen affinity purification

Target Details

Target:	MAGE-Like 2 (MAGEL2)
Alternative Name:	MAGEL2 (MAGEL2 Products)
Background:	Prader-Willi syndrome (PWS) is caused by the loss of expression of imprinted genes in chromosome 15q11-q13 region. Affected individuals exhibit neonatal hypotonia, developmental delay, and childhood-onset obesity. Necdin (NDN), a gene involved in the terminal differentiation of neurons, localizes to this region of the genome and has been implicated as one of the genes responsible for the etiology of PWS. This gene is structurally similar to NDN, is also localized to

Target Details

the PWS chromosomal region, and is paternally imprinted, suggesting a possible role for it in PWS.

Synonyms: PWLS, nM15, NDNL1

Molecular Weight: Calculated MW: 59 kDa

Application Details

Application Notes: Optimal working dilution should be determined by the investigator.

Restrictions: For Research Use only

Handling

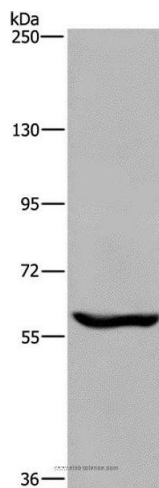
Format: Liquid

Handling Advice: Avoid freeze / thaw cycles.

Storage: -20 °C/-80 °C

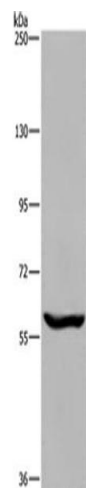
Storage Comment: Store at -20°C (regular) and -80°C (long term).

Images



Western Blotting

Image 1. Western blot analysis of Raji cell, using MAGEL2 Polyclonal Antibody at dilution of 1:250



Western Blotting

Image 2.