

Datasheet for ABIN2434274

anti-ALOX15 antibody

3 Images

[Go to Product page](#)

Overview

Quantity:	200 µL
Target:	ALOX15
Reactivity:	Human, Rat, Mouse
Host:	Rabbit
Clonality:	Polyclonal
Conjugate:	This ALOX15 antibody is un-conjugated
Application:	Western Blotting (WB), Immunohistochemistry (IHC), ELISA

Product Details

Immunogen:	Synthetic peptide of human ALOX15
Isotype:	IgG
Purification:	Antigen affinity purification

Target Details

Target:	ALOX15
Alternative Name:	ALOX15 (ALOX15 Products)
Background:	<p>Arachidonate 15-lipoxygenase is an enzyme that in humans is encoded by the ALOX15 gene. The ALOX15 gene maps to 17p13.3 in close proximity to the tumor-suppressor gene TP53. The ALOX15 gene product is implicated in antiinflammation, membrane remodeling, and cancer development/metastasis. Converts arachidonic acid to 15S-hydroperoxyeicosatetraenoic acid. Also acts on C-12 of arachidonate as well as on linoleic acid.</p>

Target Details

Molecular Weight: Calculated MW: 75 kDa

Pathways: [Regulation of Actin Filament Polymerization](#)

Application Details

Application Notes: Optimal working dilution should be determined by the investigator.

Restrictions: For Research Use only

Handling

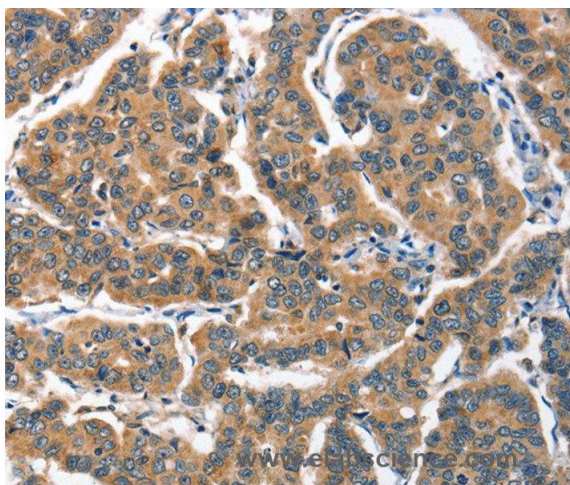
Format: Liquid

Handling Advice: Avoid freeze / thaw cycles.

Storage: -20 °C/-80 °C

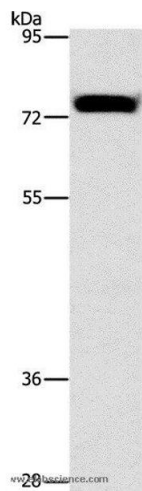
Storage Comment: Store at -20°C (regular) and -80°C (long term).

Images



Immunohistochemistry

Image 1. Immunohistochemistry of Human breast cancer using ALOX15 Polyclonal Antibody at dilution of 1:60



Western Blotting

Image 2. Western blot analysis of Hela cell, using ALOX15 Polyclonal Antibody at dilution of 1:1300



Western Blotting

Image 3.