



Datasheet for ABIN2434904

## anti-KLRF1 antibody



[Go to Product page](#)

### 3 Images

#### Overview

Quantity:	200 µL
Target:	KLRF1
Reactivity:	Human, Mouse, Rat
Host:	Rabbit
Clonality:	Polyclonal
Conjugate:	This KLRF1 antibody is un-conjugated
Application:	ELISA, Western Blotting (WB), Immunohistochemistry (IHC)

#### Product Details

Immunogen:	Synthetic peptide of human KLRF1
Isotype:	IgG
Purification:	Antigen affinity purification

#### Target Details

Target:	KLRF1
Alternative Name:	KLRF1 ( <a href="#">KLRF1 Products</a> )
Background:	KLRF1, an activating homodimeric C-type lectin-like receptor (CTLR), is expressed on nearly all natural killer (NK) cells and stimulates their cytotoxicity and cytokine release Synonyms: NKp80, CLEC5C
Molecular Weight:	Calculated MW: 27 kDa

## Application Details

Application Notes: Optimal working dilution should be determined by the investigator.

Restrictions: For Research Use only

## Handling

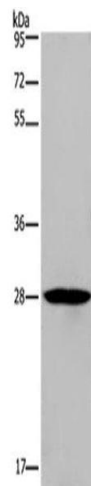
Format: Liquid

Handling Advice: Avoid freeze / thaw cycles.

Storage: -20 °C/-80 °C

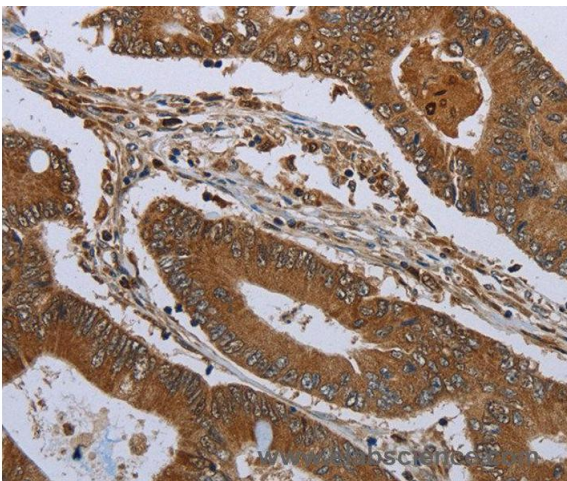
Storage Comment: Store at -20°C (regular) and -80°C (long term).

## Images



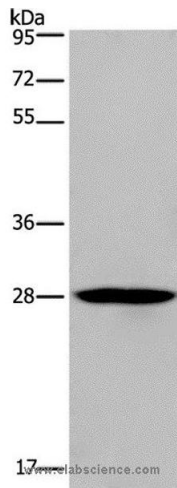
### Western Blotting

**Image 1.**



### Immunohistochemistry

**Image 2.** Immunohistochemistry of Human colon cancer using KLRF1 Polyclonal Antibody at dilution of 1:30



### Western Blotting

**Image 3.** Western blot analysis of Human bladder carcinoma tissue, using KLRF1 Polyclonal Antibody at dilution of 1:300