

Datasheet for ABIN2443871
anti-ROBO4 antibody (full length)



[Go to Product page](#)

1 Image

Overview

Quantity:	100 µL
Target:	ROBO4
Binding Specificity:	full length
Reactivity:	Human, Mouse
Host:	Guinea Pig
Clonality:	Polyclonal
Conjugate:	This ROBO4 antibody is un-conjugated
Application:	Western Blotting (WB), Flow Cytometry (FACS)

Product Details

Immunogen:	Recombinant protein
Isotype:	IgG1
Specificity:	The antibody recognizes Robo-4 protein.

Target Details

Target:	ROBO4
Alternative Name:	Robo4 (ROBO4 Products)
Background:	<p>The Robo (Roundabout) family of receptors is known for its guidance role during development. Studies have shown that one of the family members, Robo4, is specifically expressed in the vascular endothelium and may provide directional cues to migrating endothelial cells. Recent evidence shows that Robo4-deficient mice have increased angiogenesis, suggesting that</p>

Target Details

Robo4 may play a role in restricting vascular sprouting.

UniProt: Q6EIG7

Application Details

Application Notes: If reconstituted with deionized water in 100 µl: WB 1:1000; FACS 1:300.

Restrictions: For Research Use only

Handling

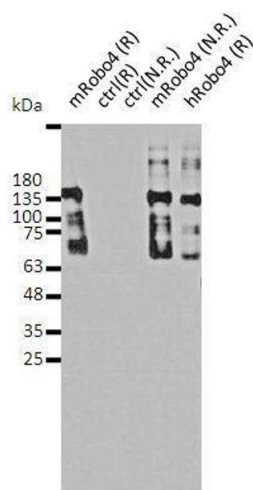
Format: Lyophilized

Preservative: Without preservative

Storage: 4 °C/-20 °C/-80 °C

Storage Comment: Lyophilized antibodies can be kept at 4°C for up to 3 months and should be kept at -20°C for long-term storage (2 years). To avoid freeze-thaw cycles, reconstituted antibodies should be aliquoted before freezing for long-term (1 year) storage (-80°C) or kept at 4°C for short-term usage (2 months). For maximum recovery of product, centrifuge the original vial prior to removing the cap. Further dilutions can be made with the assay buffer. After the maximum long-term storage period (2 years lyophilized or 1 year reconstituted) antibodies should be tested in your assay with a standard sample to verify if you have noticed any decrease in their efficacy. To limit antibody loss or degradation, BSA (final concentration 1%) and sodium azide (final concentration 0.02%) can be added to the suggested first dilution. It is important to first verify if those preservatives are compatible with your assay.

Images



Western Blotting

Image 1. Protein sample (3 µg) from HEK 293 cells transiently transfected with mouse (m) or human (h) Robo4 cDNA vector or from untransfected cells (negative control, ctrl) on a 12% gel under reduced (R) or non- reduced condition (N.R.), incubated with mRobo4. Stained bands were detected only in sample from cells overexpressing mouse and human Robo4.