

Datasheet for ABIN2444073

CD235a/GYPA Protein (AA 1-108) (His tag,Fc Tag)



[Go to Product page](#)

1 Image

Overview

Quantity:	50 µg
Target:	CD235a/GYPA (GYPA)
Protein Characteristics:	AA 1-108
Origin:	Mouse
Source:	HEK-293 Cells
Protein Type:	Recombinant
Purification tag / Conjugate:	This CD235a/GYPA protein is labelled with His tag,Fc Tag.

Product Details

Sequence:	AA 1-108
Characteristics:	This protein carries a human IgG1 Fc tag at the N-terminus and a polyhistidine tag at the C-terminus. The protein has a calculated MW of 39.6 kDa. The protein migrates as 60-66 kDa under reducing (R) condition (SDS-PAGE) due to glycosylation.
Purity:	>90 % as determined by SDS-PAGE.
Endotoxin Level:	Less than 1.0 EU per µg by the LAL method.

Target Details

Target:	CD235a/GYPA (GYPA)
Alternative Name:	Glycophorin A (GYPA Products)
Background:	Glycophorin-A, a member of the glycophorin-A family, is also known as CD235a and Gypa, which is heavily glycosylated on serine and threonine residues at the N-terminal extracellular

Target Details

domain. CD235a, a single-pass type III membrane protein, is the major intrinsic membrane sialoglycoprotein of the erythrocyte. Also, CD235a appears to be important for the function of SLC4A1 and is required for high activity of SLC4A1. Furthermore, CD235a may be involved in translocation of SLC4A1 to the plasma membrane.

Molecular Weight: 39.1 kDa

UniProt: [P14220](#)

Pathways: [Maintenance of Protein Location](#)

Application Details

Restrictions: For Research Use only

Handling

Format: Lyophilized

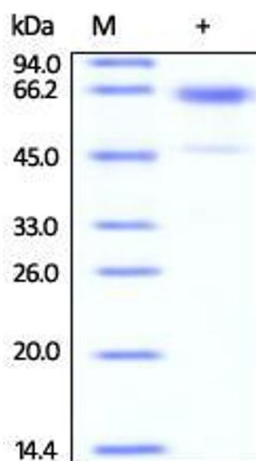
Buffer: Tris with Glycine, Arginine and NaCl, pH 7.5

Handling Advice: Please avoid repeated freeze-thaw cycles.

Storage: -20 °C

Storage Comment: Lyophilized Protein should be stored at -20 °C or lower for long term storage. Upon reconstitution, working aliquots should be stored at -20 °C or -70 °C. Avoid repeated freeze-thaw cycles.

Images



SDS-PAGE

Image 1. Mouse Glycophorin A, His Tag & Fc Tag on SDS-PAGE under reducing (R) condition. The gel was stained overnight with Coomassie Blue. The purity of the protein is greater than 90%.