



[Go to Product page](#)

Datasheet for ABIN2450392
anti-CNR1 antibody (AA 461-472)

2 Images

Overview

Quantity:	1 each
Target:	CNR1
Binding Specificity:	AA 461-472
Reactivity:	Human
Host:	Rabbit
Clonality:	Polyclonal
Conjugate:	This CNR1 antibody is un-conjugated
Application:	Western Blotting (WB), Immunohistochemistry (Paraffin-embedded Sections) (IHC (p))

Product Details

Immunogen:	Human CB1 receptor sequence amino acids 461-472 (MSVSTDTSAEAL).
Isotype:	IgG
Specificity:	Human CB1 receptor sequence amino acids 461-472 (MSVSTDTSAEAL)
Cross-Reactivity:	Mouse (Murine), Rat (Rattus)
Predicted Reactivity:	Percent identity by BLAST analysis: Human, Chimpanzee, Gorilla, Monkey, Marmoset, Mouse, Rat, Panda, Dog, Horse, Pig, Opossum, Platypus (100%) Bat, Turkey, Zebra finch, Chicken, Xenopus (92%) Lizard, Stickleback, Pufferfish (83%).
Purification:	Immunoaffinity Chromatography

Target Details

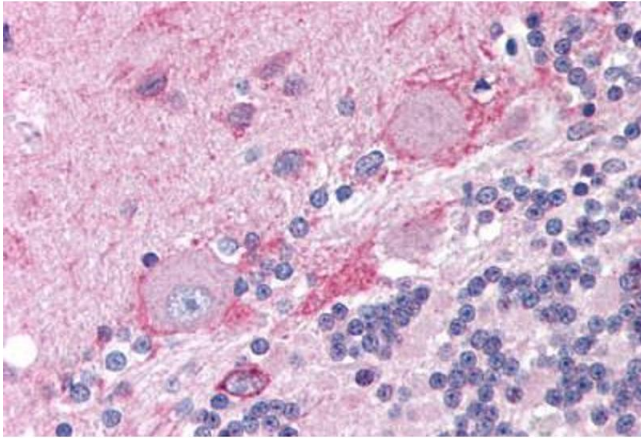
Target:	CNR1
Alternative Name:	CNR1 / CB1 (CNR1 Products)
Background:	Standard Gene Symbol: CNR1, Gene Family: GPCR, Gene Subfamily: Cannabinoid, Synonyms: CNR1, CB-R, CB1 receptor, CB1A, CB1R, Cannabinoid receptor 1, Cannabinoid receptor CB1, Cannabinoid Receptor I, CB1, CB1K5, CANN6, Cannabinoid receptor 1 (brain), CNR, Cannabinoid CB(1) receptor, CB1 cannabinoid receptor, Central cannabinoid receptor
Gene ID:	1268
UniProt:	P21554
Pathways:	Feeding Behaviour

Application Details

Application Notes:	IHC-P (5 µg/mL), WB
Restrictions:	For Research Use only

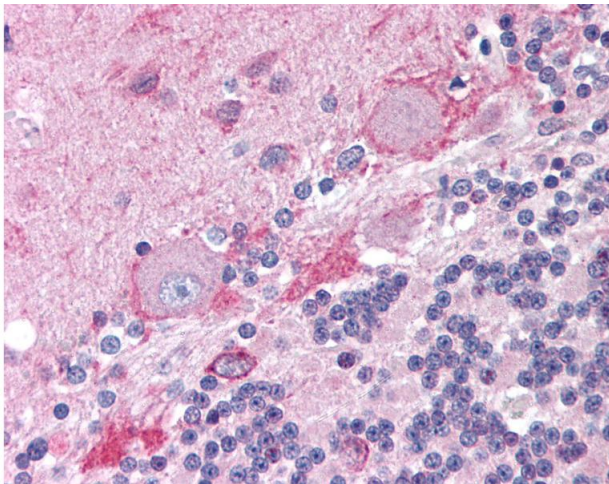
Handling

Concentration:	Lot specific
Buffer:	Tris buffered saline, 0.5% BSA, 0.02% sodium azide.
Preservative:	Sodium azide
Precaution of Use:	This product contains sodium azide: a POISONOUS AND HAZARDOUS SUBSTANCE which should be handled by trained staff only.
Handling Advice:	Avoid repeat freeze-thaw cycles.
Storage:	4 °C/-20 °C
Storage Comment:	Long term: -20°C, Short term: +4°C, Avoid freeze-thaw cycles.



Immunohistochemistry

Image 1. Human Brain, Cerebellum (formalin-fixed, paraffin-embedded) stained with CNR1 antibody ABIN214174 at 5 μ g/ml followed by biotinylated goat anti-rabbit IgG secondary antibody ABIN481713, alkaline phosphatase-streptavidin and chromogen.



Immunohistochemistry

Image 2. Anti-CNR1 / CB1 antibody IHC of human brain, cerebellum. Immunohistochemistry of formalin-fixed, paraffin-embedded tissue after heat-induced antigen retrieval. Antibody concentration 5 μ g/ml.