

Datasheet for ABIN2450545  
**anti-F2RL2 antibody (C-Term)**



[Go to Product page](#)

1 Image

## Overview

Quantity:	50 µg
Target:	F2RL2
Binding Specificity:	C-Term
Reactivity:	Human
Host:	Rabbit
Clonality:	Polyclonal
Conjugate:	This F2RL2 antibody is un-conjugated
Application:	Immunohistochemistry (IHC), Immunohistochemistry (Paraffin-embedded Sections) (IHC (p)), Immunocytochemistry (ICC)

## Product Details

Brand:	IHC-plus™
Immunogen:	Synthetic 14 amino acid peptide from C-terminus of human F2RL2. Percent identity with other species by BLAST analysis: Human, Gorilla (100%), Gibbon, Monkey (93%), Marmoset (86%).  Type of Immunogen: Synthetic peptide
Specificity:	Human F2RL2. BLAST analysis of the peptide immunogen showed no homology with other human proteins.
Purification:	Immunoaffinity purified

## Target Details

---

Target:	F2RL2
Alternative Name:	F2RL2 / PAR3 ( <a href="#">F2RL2 Products</a> )
Background:	Name/Gene ID: F2RL2 Subfamily: Proteinase-activated Family: GPCR  Synonyms: F2RL2, PAR-3, Thrombin receptor-like 2, PAR3, Protease-activated receptor 3
Gene ID:	2151
Pathways:	<a href="#">Cell-Cell Junction Organization, Regulation of G-Protein Coupled Receptor Protein Signaling</a>

## Application Details

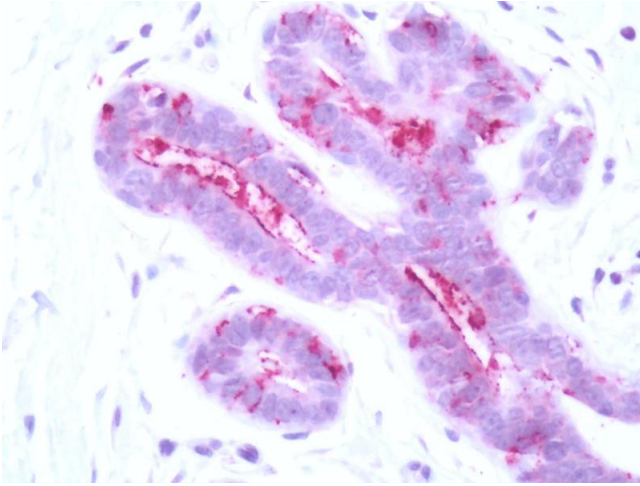
---

Application Notes:	Approved: ICC, IHC, IHC-P (5 - 10 µg/mL)  Not recommended for: WB
Comment:	Target Species of Antibody: Human
Restrictions:	For Research Use only

## Handling

---

Format:	Liquid
Concentration:	Lot specific
Buffer:	PBS, less than 0.1 % sodium azide.
Preservative:	Sodium azide
Precaution of Use:	This product contains Sodium azide: a POISONOUS AND HAZARDOUS SUBSTANCE which should be handled by trained staff only.
Storage:	4 °C, -20 °C
Storage Comment:	Aliquot and store undiluted at -20°C or below for up to 1 year. Can be stored undiluted at 4°C for up to 1 month. Avoid freeze-thaw cycles.
Expiry Date:	12 months



### Immunohistochemistry

**Image 1.** Human Breast: Formalin-Fixed, Paraffin-Embedded (FFPE)