

Datasheet for ABIN2450597

anti-Glucagon Receptor antibody (Extracellular Domain)[Go to Product page](#)**1** Image

Overview

Quantity:	50 µg
Target:	Glucagon Receptor (GCGR)
Binding Specificity:	Extracellular Domain
Reactivity:	Human, Monkey
Host:	Rabbit
Clonality:	Polyclonal
Conjugate:	This Glucagon Receptor antibody is un-conjugated
Application:	Immunohistochemistry (IHC), Immunohistochemistry (Paraffin-embedded Sections) (IHC (p))

Product Details

Brand:	IHC-plus™
Immunogen:	Synthetic 16 amino acid peptide from 1st extracellular domain of human Glucagon Receptor. Percent identity with other species by BLAST analysis: Human, Gorilla, Gibbon, Monkey (100%), Elephant, Dog, Horse, Opossum (88%), Mouse, Rat, Hamster, Panda (81%). Type of Immunogen: Synthetic peptide
Specificity:	Human Glucagon Receptor. BLAST analysis of the peptide immunogen showed no homology with other human proteins.
Purification:	Immunoaffinity purified

Target Details

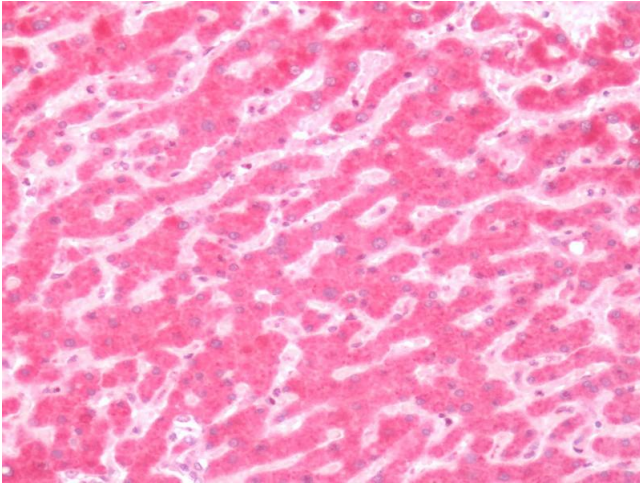
Target:	Glucagon Receptor (GCGR)
Alternative Name:	GCGR / Glucagon Receptor (GCGR Products)
Background:	Name/Gene ID: GCGR Subfamily: Glucagon Family: GPCR Synonyms: GCGR, GL-R, Glucagon receptor, GGR
Gene ID:	2642
Pathways:	Carbohydrate Homeostasis , Regulation of Carbohydrate Metabolic Process

Application Details

Application Notes:	Approved: IHC, IHC-P (10 - 20 µg/mL)
Comment:	Target Species of Antibody: Human
Restrictions:	For Research Use only

Handling

Format:	Liquid
Concentration:	Lot specific
Buffer:	PBS, less than 0.1 % sodium azide.
Preservative:	Sodium azide
Precaution of Use:	This product contains Sodium azide: a POISONOUS AND HAZARDOUS SUBSTANCE which should be handled by trained staff only.
Storage:	4 °C,-20 °C
Storage Comment:	Aliquot and store undiluted at -20°C or below for up to 1 year. Can be stored undiluted at 4°C for up to 1 month. Avoid freeze-thaw cycles.
Expiry Date:	12 months



Immunohistochemistry

Image 1. Human Liver: Formalin-Fixed, Paraffin-Embedded (FFPE)