



Datasheet for ABIN2450697  
**anti-HSD11B1 antibody (AA 77-92)**



[Go to Product page](#)

2 Images

Overview

Quantity:	1 each
Target:	HSD11B1
Binding Specificity:	AA 77-92
Reactivity:	Human
Host:	Rabbit
Clonality:	Polyclonal
Conjugate:	This HSD11B1 antibody is un-conjugated
Application:	Western Blotting (WB), Immunohistochemistry (Paraffin-embedded Sections) (IHC (p))

Product Details

Immunogen:	Human 11-HSD1 amino acids 77-92 (CLELGAASAHYIAGT).
Isotype:	IgG
Specificity:	Human 11 beta-HSD1 amino acids 77-92 (CLELGAASAHYIAGT)
Cross-Reactivity:	Mouse (Murine), Rat (Rattus)
Predicted Reactivity:	Percent identity by BLAST analysis: Human, Gorilla, Gibbon, Monkey, Marmoset, Mouse, Rat, Hamster, Elephant (100%) Sheep, Dog, Bovine, Panda, Horse, Rabbit, Guinea pig (93%) Bat, Pig (87%) Xenopus (80%).
Purification:	Immunoaffinity Chromatography

## Target Details

Target:	HSD11B1
Alternative Name:	HSD11B1 / HSD11B ( <a href="#">HSD11B1 Products</a> )
Background:	Standard Gene Symbol: HSD11B1, Synonyms: HSD11B1, 11-beta-HSD1, 11-DH, CORTRD2, HSD11B, HSD11L, SDR26C1, HDL, HSD11
Gene ID:	3290
UniProt:	<a href="#">P28845</a>
Pathways:	<a href="#">Metabolism of Steroid Hormones and Vitamin D</a> , <a href="#">Steroid Hormone Biosynthesis</a> , <a href="#">Regulation of Carbohydrate Metabolic Process</a>

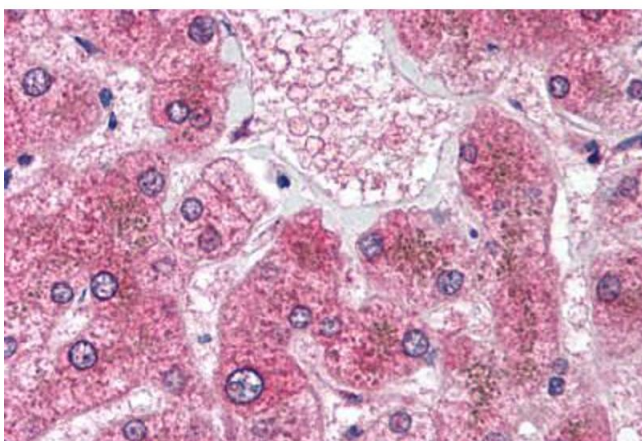
## Application Details

Application Notes:	IHC-P (5 µg/mL), WB
Restrictions:	For Research Use only

## Handling

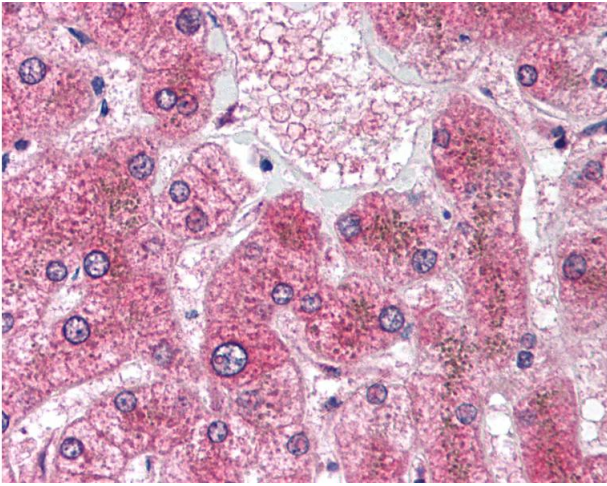
Concentration:	Lot specific
Buffer:	TBS.
Handling Advice:	Avoid repeat freeze-thaw cycles.
Storage:	4 °C/-20 °C
Storage Comment:	Long term: -20°C, Short term: +4°C, Avoid freeze-thaw cycles.

## Images



### Immunohistochemistry

**Image 1.** Human Liver (formalin-fixed, paraffin-embedded) stained with HSD11B1 antibody ABIN214180 at 5 µg/ml followed by biotinylated goat anti-rabbit IgG secondary antibody ABIN481713, alkaline phosphatase-streptavidin and chromogen.



### Immunohistochemistry

**Image 2.** Anti-HSD11B1 antibody IHC of human liver. Immunohistochemistry of formalin-fixed, paraffin-embedded tissue after heat-induced antigen retrieval. Antibody concentration 5 ug/ml.