

Datasheet for ABIN2451494

anti-MAP1B antibody[Go to Product page](#)**1** Image

Overview

Quantity:	250 µL
Target:	MAP1B
Reactivity:	Human, Rat, Cow
Host:	Mouse
Clonality:	Monoclonal
Conjugate:	This MAP1B antibody is un-conjugated
Application:	Immunohistochemistry (IHC), Immunofluorescence (IF), Immunohistochemistry (Paraffin-embedded Sections) (IHC (p))

Product Details

Brand:	IHC-plus™
Immunogen:	Purified bovine brain MAPs.
Isotype:	IgG1
Specificity:	Recognizes microtubule associated protein 1B (MAP1B, also known as MAP5, MAP1.2, MAP1(x) or MAP1X). Does not cross-react with other MAPs, tau or tubulin.
No Cross-Reactivity:	Chicken
Purification:	Protein G purified

Target Details

Target:	MAP1B
---------	-------

Target Details

Alternative Name:	MAP1B (MAP1B Products)
Background:	Name/Gene ID: MAP1B Synonyms: MAP1B, FUTSCH, MAP-1B, MAP5
Gene ID:	4131
UniProt:	P46821
Pathways:	Microtubule Dynamics , Regulation of Cell Size

Application Details

Application Notes:	Approved: IF, IHC, IHC-P (2.5 µg/mL) Usage: Immunohistochemistry: This antibody was validated for use in immunohistochemistry on a panel of 21 formalin-fixed, paraffin-embedded (FFPE) human tissues after heat induced antigen retrieval in pH 6.0 citrate buffer. After incubation with the primary antibody, slides were incubated with biotinylated secondary antibody, followed by alkaline phosphatase-streptavidin and chromogen. The stained slides were evaluated by a pathologist to confirm staining specificity. The optimal working concentration for this antibody was determined to be 2.5 µg/mL.
Comment:	Target Species of Antibody: Bovine
Restrictions:	For Research Use only

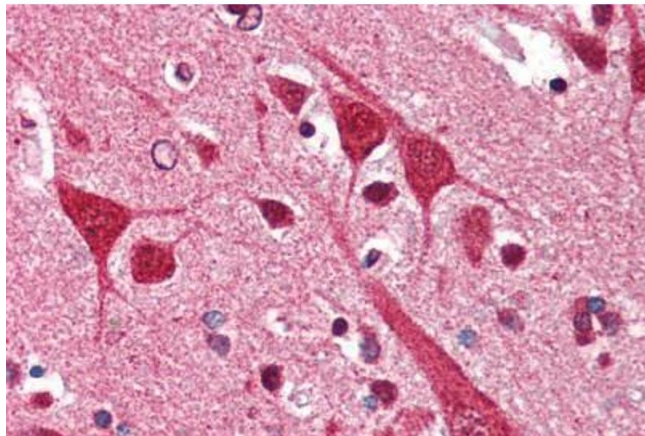
Handling

Format:	Liquid
Concentration:	Lot specific
Buffer:	10 mM PBS, pH 7.4, 0.2 % BSA, 0.09 % sodium azide. Sourced in TCS.
Preservative:	Sodium azide
Precaution of Use:	This product contains Sodium azide: a POISONOUS AND HAZARDOUS SUBSTANCE which should be handled by trained staff only.
Handling Advice:	Avoid repeat freeze-thaw cycles.
Storage:	4 °C, -20 °C

Handling

Storage Comment: Short term: 4°C. Long term: Store at -20°C. Avoid freeze-thaw cycles.

Images



Immunohistochemistry (Paraffin-embedded Sections)

Image 1. Human Brain, Cortex (formalin-fixed, paraffin-embedded) stained with MAP1B antibody ABIN307179 at 2.5 ug/ml followed by biotinylated anti-mouse IgG secondary antibody ABIN481714, alkaline phosphatase-streptavidin and chromogen.