



[Go to Product page](#)

Datasheet for ABIN2451653  
**anti-PTGIS antibody (AA 299-329)**

2 Images

Overview

Quantity:	1 each
Target:	PTGIS
Binding Specificity:	AA 299-329
Reactivity:	Cow
Host:	Rabbit
Clonality:	Polyclonal
Conjugate:	This PTGIS antibody is un-conjugated
Application:	Western Blotting (WB), Immunohistochemistry (Paraffin-embedded Sections) (IHC (p)), Immunoprecipitation (IP)

Product Details

Immunogen:	Bovine PGIS amino acids 299-329 (LLKNPEALAAVRGELETVLLGAEQPISQMTT).
Isotype:	IgG
Specificity:	Bovine amino acids 299-329 (LLKNPEALAAVRGELETVLLGAEQPISQMTT)1,2,3
Cross-Reactivity:	Human, Rat (Rattus), Sheep (Ovine)
Predicted Reactivity:	Percent identity by BLAST analysis: Bovine (100%) Horse, Pig (87%) Gibbon, Monkey, Bat (83%) Human (80%).
Purification:	Immunoaffinity Chromatography

## Target Details

---

Target:	PTGIS
Alternative Name:	PGIS / PTGIS ( <a href="#">PTGIS Products</a> )
Background:	Standard Gene Symbol: PTGIS, Synonyms: PTGIS, CYP8A1, Prostaglandin I2 synthase, Prostacyclin synthase, PTGI, CYP8, PGIS
Gene ID:	5740
UniProt:	<a href="#">Q16647</a>

## Application Details

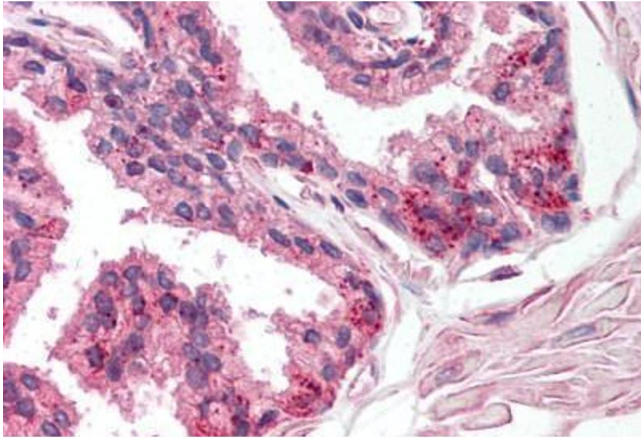
---

Application Notes:	IHC-P (5 Åµg/mL), IP, WB
Restrictions:	For Research Use only

## Handling

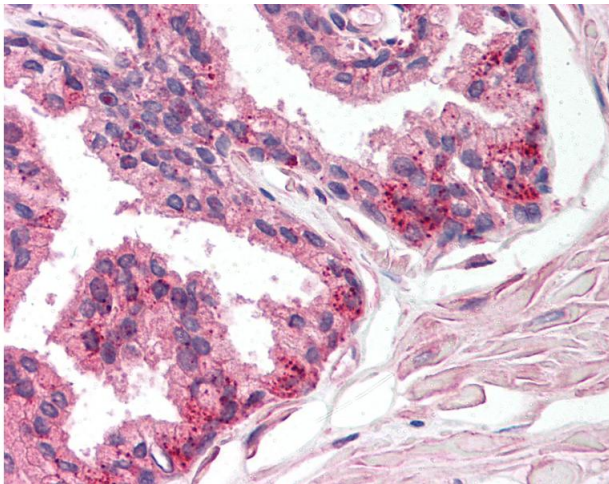
---

Format:	Liquid
Concentration:	Lot specific
Buffer:	TBS, pH 7.4, 0.5% BSA, 0.02% sodium azide, 50% glycerol.
Preservative:	Sodium azide
Precaution of Use:	This product contains sodium azide: a POISONOUS AND HAZARDOUS SUBSTANCE which should be handled by trained staff only.
Handling Advice:	Avoid repeat freeze-thaw cycles.
Storage:	4 °C/-20 °C
Storage Comment:	Long term: -20°C, Short term: +4°C, Avoid freeze-thaw cycles.



#### Immunohistochemistry (Paraffin-embedded Sections)

**Image 1.** Human Prostate (formalin-fixed, paraffin-embedded) stained with PTGIS antibody ABIN214200 at 5 ug/ml followed by biotinylated goat anti-rabbit IgG secondary antibody ABIN481713, alkaline phosphatase-streptavidin and chromogen.



#### Immunohistochemistry

**Image 2.** Anti-PTGIS antibody IHC of human prostate. Immunohistochemistry of formalin-fixed, paraffin-embedded tissue after heat-induced antigen retrieval. Antibody concentration 5 ug/ml.