



[Go to Product page](#)

Datasheet for ABIN2451939

anti-CDC6 antibody (AA 1-326)

7 Images

Overview

Quantity:	100 µg
Target:	CDC6
Binding Specificity:	AA 1-326
Reactivity:	Human, Mouse
Host:	Rabbit
Clonality:	Polyclonal
Application:	Western Blotting (WB), Immunofluorescence (IF), Immunoprecipitation (IP)

Product Details

Immunogen:	Recombinant GST-human CDC6 (1-326 amino acids) expressed in E. coli and purified.
Characteristics:	The antiserum was first adsorbed with GST conjugated agarose column and then the antibody in the pass-through fractions were purified with GST-CDC6 conjugated column.
Purification:	The antiserum was first adsorbed with GST conjugated agarose column and then the antibody in the pass-through fractions were purified with GST-CDC6 conjugated column.
Sterility:	Sterile filtered

Target Details

Target:	CDC6
Alternative Name:	CDC6 (CDC6 Products)
Background:	Key words: CDC6, DNA replication, Regulation of DNA replication, Regulation of cycline-dependent kinase activity, Phosphorylation, Checkpoint, Cell cycle, Cell division. Mitosis, ATP

Target Details

binding, Nucleotide-triphosphatase activity, Chromatin binding

UniProt: [Q99741](#)

Pathways: [DNA Replication](#), [Synthesis of DNA](#)

Application Details

Application Notes:

1. Western blotting: 1/1,000~3,000
2. Immunoprecipitation (Assay dependent)
3. Immunofluorescence staining

Restrictions: For Research Use only

Handling

Format: Liquid

Concentration: 1 mg/mL

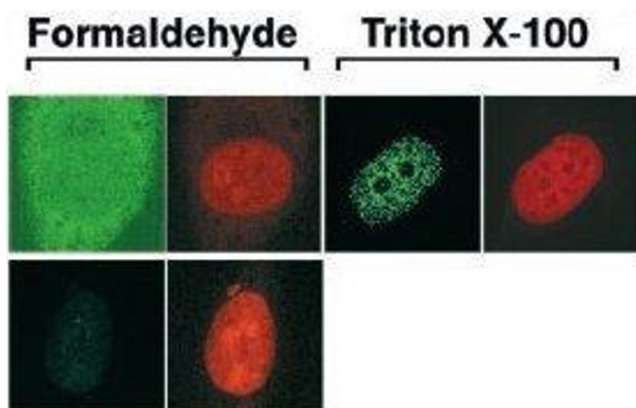
Buffer: PBS with 50 % glycerol. Azide and carrier-protein free.

Preservative: Azide free

Storage: -20 °C

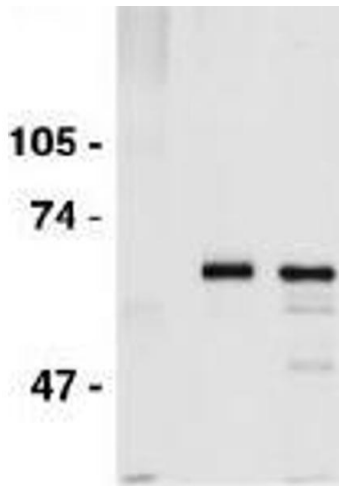
Storage Comment: Upon arrival centrifuge briefly and store at -20 C.

Images



Immunofluorescence

Image 1.



Western Blotting

Image 2.



Western Blotting

Image 3.

Please check the [product details page](#) for more images. Overall 7 images are available for ABIN2451939.