

Datasheet for ABIN2452087

anti-RAD21 antibody (C-Term)**2** Images**1** Publication[Go to Product page](#)

Overview

Quantity:	50 µg
Target:	RAD21
Binding Specificity:	C-Term
Reactivity:	Human, Mouse, Hamster
Host:	Rabbit
Clonality:	Polyclonal
Conjugate:	This RAD21 antibody is un-conjugated
Application:	Western Blotting (WB), Immunofluorescence (IF)

Product Details

Immunogen:	Human Rad21 C-terminal peptide, C-ATPGPRFHII
Purification:	Affinity purified with immunogen peptide from rabbit serum of immunized rabbit
Sterility:	Sterile filtered

Target Details

Target:	RAD21
Alternative Name:	Rad21 (RAD21 Products)
Background:	Rad21 (631 aa, 71 kDa) 2) is a cleavable component of cohesin complex, involved in chromosome cohesion during cell cycle, in DNA repair, and in apoptosis. The cohesin complex is required for the cohesion of sister chromatids after DNA replication. The cohesin complex apparently forms a large proteinaceous ring within which sister chromatids can be trapped. At

Target Details

metaphase-anaphase transition, this protein is cleaved by separase/ESPL1 and dissociates from chromatin, allowing sister chromatids to segregate.

UniProt: [O60216](#)

Pathways: [Positive Regulation of Endopeptidase Activity](#)

Application Details

Application Notes: 1) Western blotting: 1/2,000 dilution
2) Immunofluorescence staining: 1/100~1/500 dilution

Restrictions: For Research Use only

Handling

Format: Liquid

Concentration: 1 mg/mL

Buffer: PBS (x1), 50 % glycerol. Azide and carrier free.

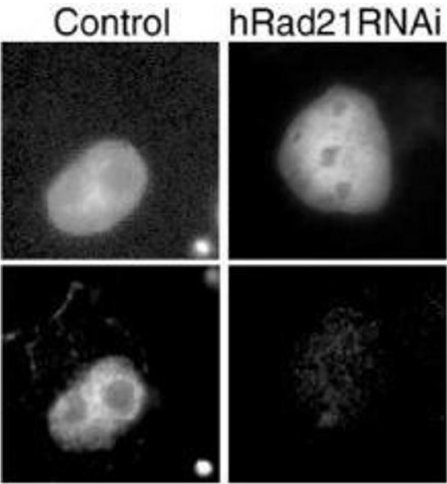
Preservative: Azide free

Storage: -20 °C

Storage Comment: Upon arrival centrifuge briefly and store at -20 C.

Publications

Product cited in: Schaeffer, Hansen, Morris, LeBoeuf, Abrass: "RNA-binding protein IGF2BP2/IMP2 is required for laminin-?2 mRNA translation and is modulated by glucose concentration." in: **American journal of physiology. Renal physiology**, Vol. 303, Issue 1, pp. F75-82, (2012) ([PubMed](#)).



Immunofluorescence

Image 1.

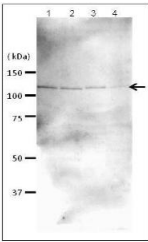


Fig.1 Western blot analysis of Rad21 in the whole cell extracts

Anti-Rad21 antibody was used at 1/2,000 dilution. Rad21 migrates as a ~120 kDa protein (Reference)

Samples: Crude extracts,10~20 ug

1. HeLa (human)
2. MCF-7 (human)
3. NIH3T3 (mouse)
4. CHO (hamster)

Western Blotting

Image 2.