

Datasheet for ABIN2452101  
**anti-Rad6 (full length) antibody**



[Go to Product page](#)

3 Images

1 Publication

## Overview

Quantity:	100 µg
Target:	Rad6
Binding Specificity:	full length
Reactivity:	Human, Mouse, Rat, Hamster
Host:	Rabbit
Clonality:	Polyclonal
Conjugate:	Un-conjugated
Application:	Western Blotting (WB), Immunofluorescence (IF), Immunoprecipitation (IP)

## Product Details

Immunogen:	Human Rad6B full-length recombinant protein
Cross-Reactivity (Details):	Not tested in other species.
Purification:	Affinity purified with the immunogen conjugated to agarose
Sterility:	Sterile filtered

## Target Details

Target:	Rad6
Background:	Resume of DNA synthesis, which was halted by various physical and chemical factors, was triggered by repair system including Rad6. Rad6 (152a.a, 17.3 kDa) is the ubiquitin-conjugated enzyme E2A, and complex with two Rad18 Molecules, ubiquitin ligase E3, to ubiquitinate PCNA by utilizing poly-ubiquitin chain that HLTF-UBC13 synthesized and they are involved in

## Target Details

---

translesion DNA synthesis (TLS) and template switch (TS). Two isoforms of Rad6, Rad6A and Rad6B differs in only 6 amino acids. They also play an important role in epigenetic transcriptional regulation by catalyzing the monoubiquitination of histone H2B at Lys-120.

UniProt: [P49459](#), [P63146](#)

## Application Details

---

Application Notes: 1) Western blotting: 1,000~2,000 fold dilution  
2) Immunoprecipitation (assay dependent)  
3) Immunofluorescent staining (assay dependent)  
Other applications have not been tested

Restrictions: For Research Use only

## Handling

---

Format: Liquid

Concentration: 1 mg/mL

Buffer: PBS (x1), 50 % glycerol. Azide and carrier free.

Preservative: Azide free

Storage: -20 °C

Storage Comment: Upon arrival centrifuge briefly and store at -20 C.

## Publications

---

Product cited in: Masuyama, Tateishi, Yomogida, Nishimune, Suzuki, Sakuraba, Inoue, Ogawa, Yamaizumi: "Regulated expression and dynamic changes in subnuclear localization of mammalian Rad18 under normal and genotoxic conditions." in: **Genes to cells : devoted to molecular & cellular mechanisms**, Vol. 10, Issue 8, pp. 753-62, (2005) ([PubMed](#)).

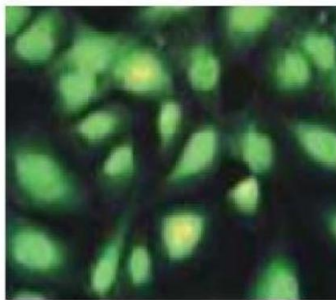
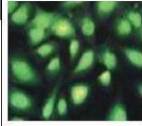
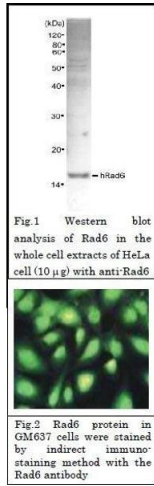
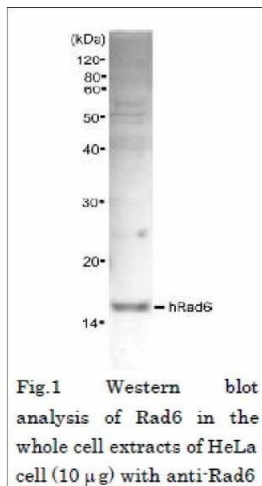


Fig.2 Rad6 protein in GM637 cells were stained by indirect immunostaining method with the Rad6 antibody



## Western Blotting

Image 1.

## Immunofluorescence

Image 2.

## Western Blotting

Image 3.