

Datasheet for ABIN2452139

anti-SUMO2/3 antibody (full length)

7 Images

1 Publication

[Go to Product page](#)

Overview

Quantity:	100 µg
Target:	SUMO2/3
Binding Specificity:	full length
Reactivity:	Human, Mouse, Rat
Host:	Rat
Clonality:	Monoclonal
Conjugate:	This SUMO2/3 antibody is un-conjugated
Application:	Western Blotting (WB), Immunofluorescence (IF), ELISA, Immunohistochemistry (Frozen Sections) (IHC (fro))

Product Details

Immunogen:	Recombinant GST-fused human SUMO3 (full length)
Clone:	3H12
Isotype:	IgG2a kappa
Specificity:	Specific to SUMO2 and SUMO3 of human, simian, mouse, hamster and rat. Does not react with SUMO1. This antibody recognizes both SUMO2 and SUMO3, but not SUMO1.
Cross-Reactivity (Details):	Not tested for other species
Purification:	The antibody was produced from the hybridoma cultured in serum-free medium and purified under mild conditions by propriety chromatography processes.
Sterility:	Sterile filtered

Target Details

Target:	SUMO2/3
Alternative Name:	SUMO2/3 (SUMO2/3 Products)
Background:	<p>SUMO (Small Ubiquitin-like Modifier) proteins are a family of small proteins that are covalently attached to and detached from other proteins in cells to modify their function. Unlike ubiquitination, which targets proteins for degradation, SUMO modification plays a critical role in a number of cellular functions including nucleocytoplasmic transport, gene expression, cell cycle and formation of subnuclear structures such as promyelocytic leukemia (PML) bodies. There are three confirmed SUMO isoforms in human, SUMO1, SUMO2 and SUMO3. SUMO2 and 3 show a high degree of similarity to each other and are distinct from SUMO1. Individual SUMO family members are all targeted to different proteins with diverse biological functions. SUMO2/3 forms poly-(SUMO) chains, is conjugated to topoisomerase II and APP, and regulates chromosomal segregation and cellular responses to environmental stress.</p>
Molecular Weight:	10,871 Da with 95 AA, 11,637 Da with 103 AA
UniProt:	P61956 , P55854

Application Details

Application Notes:	<ol style="list-style-type: none">1. Western blotting: 1/1,0002. Immunocytochemistry/Immunofluorescence staining: 1/100~1/5003. Immunohistochemistry,frozen section: 1/100~1/5004. ELISA (Assay dependent concentration) <p>Other applications have not been tested.</p>
Restrictions:	For Research Use only

Handling

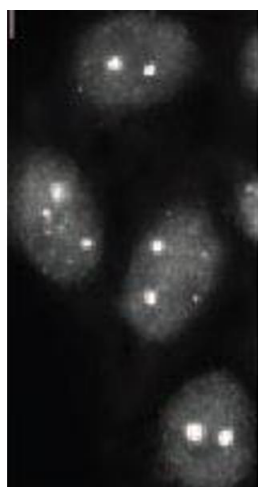
Format:	Liquid
Concentration:	1 mg/mL
Buffer:	PBS (x1), 50 % glycerol. Azide and carrier free.
Preservative:	Azide free
Storage:	-20 °C
Storage Comment:	Upon arrival centrifuge briefly and store at -20 C.

Publications

Product cited in: Aaronson, Bottaro, Miki, Ron, Finch, Fleming, Ahn, Taylor, Rubin: "Keratinocyte growth factor. A fibroblast growth factor family member with unusual target cell specificity." in: **Annals of the New York Academy of Sciences**, Vol. 638, pp. 62-77, (1992) ([PubMed](#)).

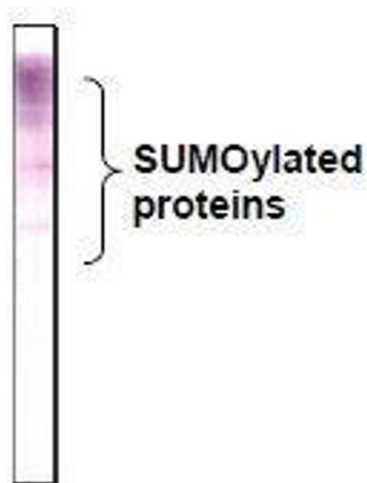
Rubin, Osada, Finch, Taylor, Rudikoff, Aaronson: "Purification and characterization of a newly identified growth factor specific for epithelial cells." in: **Proceedings of the National Academy of Sciences of the United States of America**, Vol. 86, Issue 3, pp. 802-6, (1989) ([PubMed](#)).

Images



Immunofluorescence

Image 1.

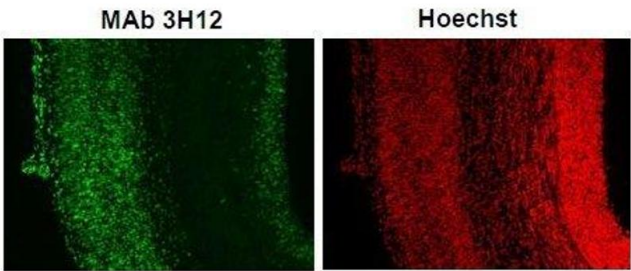


Western Blotting

Image 2.

Immunofluorescence

Image 3.



Please check the [product details page](#) for more images. Overall 7 images are available for ABIN2452139.