



[Go to Product page](#)

Datasheet for ABIN2452152
anti-CD248 antibody (full length)

2 Images

Overview

Quantity:	100 µL
Target:	CD248
Binding Specificity:	full length
Reactivity:	Saccharomyces cerevisiae
Host:	Rabbit
Clonality:	Polyclonal
Conjugate:	This CD248 antibody is un-conjugated
Application:	Western Blotting (WB), Immunoprecipitation (IP)

Product Details

Immunogen:	GST-full length Tem1 fusion protein expressed in E. coli
Isotype:	IgG
Characteristics:	Rabbit polyclonal antibody affinity purified with the immunogen after adsorption of anti-GST antibody with GST-affinity column.
Purification:	Affinity purified

Target Details

Target:	CD248
Alternative Name:	Tem1 (CD248 Products)
Background:	Background: Tem1 is a low-molecular-weight GTP-binding protein (GTPase) which is required

Target Details

for the termination of M phase in cell division. The defect of Tem1 was lethal, and the Tem1-defective cells were arrested at telophase with high H1-kinase activity, indicating that Tem1 is required to exit from M phase. The defect of Tem1 was suppressed by a high dose of cdc15, which encodes a protein kinase. Tem1 functions upstream of cdc15 kinase and may be required to activate the cdc15 protein kinase pathway. A cascade consisting of Tem1 and kinases act to terminate mitosis.

Application Details

Application Notes: 1) Western blotting: 1/250~1/500
2) Immunoprecipitation

Restrictions: For Research Use only

Handling

Format: Liquid

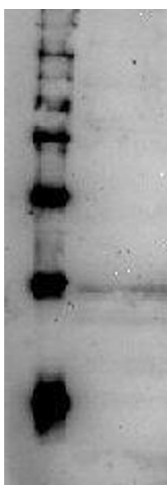
Buffer: PBS, 1 mg/mL BSA as carrier, 0.09 % sodium azide, 50 % glycerol

Preservative: Sodium azide

Precaution of Use: This product contains Sodium azide: a POISONOUS AND HAZARDOUS SUBSTANCE which should be handled by trained staff only.

Storage: -20 °C

Images



Western Blotting

Image 1.

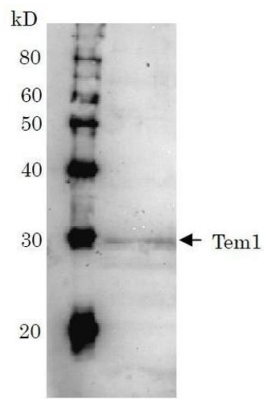


Fig.1 Detection of Tem1 (28kD) in the crude extract of *S. cerevisiae* by Western blotting using this antibody.

Western Blotting

Image 2.