

Datasheet for ABIN2452161  
**anti-VRK1 antibody (N-Term)**

11 Images

[Go to Product page](#)

## Overview

Quantity:	100 µg
Target:	VRK1
Binding Specificity:	N-Term
Reactivity:	Human
Host:	Mouse
Clonality:	Monoclonal
Conjugate:	This VRK1 antibody is un-conjugated
Application:	Western Blotting (WB), ELISA, Immunohistochemistry (IHC), Immunoprecipitation (IP), Immunofluorescence (IF)

## Product Details

Immunogen:	Synthetic peptide corresponding to N-terminus of human VRK1,MPRVKAAQAGRQSSAKRHL-C
Clone:	5D1
Isotype:	IgG2 kappa
Specificity:	Reacts with human VRK1 protein.
Cross-Reactivity (Details):	Not tested with other species.
Characteristics:	Mouse monoclonal antibody (5D1) produced in serum-free medium and purified by propriety chromatography under mild conditions (90~98 % pure). Isotype,IgG1 kappa
Sterility:	Sterile filtered

## Target Details

Target:	VRK1
Alternative Name:	VRK1 ( <a href="#">VRK1 Products</a> )
Background:	<p>Function, The VRK1 gene encodes serine/threonine kinase VRK1 (Vaccinia-Related Kinase 1, 396 aa, 45.5 kDa) which is involved in Golgi disassembly during the cell cycle following phosphorylation by PLK3 during mitosis, and required to induce Golgi fragmentation. It acts by mediating phosphorylation of a downstream target protein 'Thr-18' of p53/TP53 and may thereby prevent the interaction between p53/TP53 and MDM2. It also phosphorylates casein and histone H3. Phosphorylation of the BANF1 gene product disrupts its ability to bind DNA, reduces its binding to LEM domain-containing proteins and causes its relocalization from the nucleus to the cytoplasm. Involvement in disease Defects in VRK1 are the cause of pontocerebellar hypoplasia type 1A (PCH1A), also called pontocerebellar hypoplasia with infantile spinal muscular atrophy or pontocerebellar hypoplasia with anterior horn cell disease. PCH1A is characterized by an abnormally small cerebellum and brainstem, central and peripheral motor dysfunction from birth, gliosis and anterior horn cell degeneration resembling infantile spinal muscular atrophy</p>
Gene ID:	7443
UniProt:	<a href="#">Q99986</a>

## Application Details

Application Notes:	<ol style="list-style-type: none"><li>1. Western blotting: 1/200~1/1,000 dilution. Use of highly sensitive chemiluminescence reagents such as Lumi-Light Plus (Roche) or ImmunoStarO LD (Wako,Tokyo) are recommended.</li><li>2. Immunoprecipitation (assay dependent)</li><li>3. Immunofluorescence staining: 1/100 dilution</li><li>4. Immunohistochemistry (assay dependent)</li><li>5. ELISA (assay dependent)</li></ol>
Restrictions:	For Research Use only

## Handling

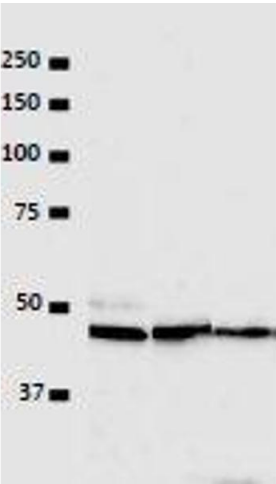
Format:	Liquid
Concentration:	1 mg/mL
Buffer:	PBS with 50 % Glycerol

Handling

Preservative: Azide free

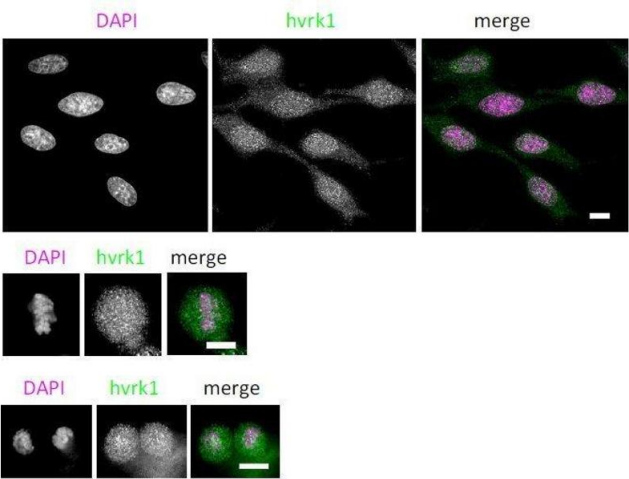
Storage: -20 °C

Images



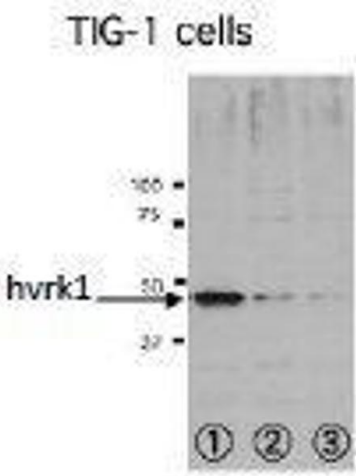
Western Blotting

Image 1.



Immunofluorescence

Image 2.



Western Blotting

Image 3.

Please check the [product details page](#) for more images. Overall 11 images are available for ABIN2452161.