

Datasheet for ABIN2455973  
**Mouse Normal Tissue Blot II**[Go to Product page](#)

## 1 Image

## Overview

Quantity:	1 applications
Host:	Mouse
Application:	Western Blotting (WB)

## Product Details

Characteristics:	<p>The mouse tissue blot is designed for proteomics research in screening for antibody and protein expression. It carries 8 different mouse tissue lysates with 15 µg of total cellular protein in each lane. Proteins were separated in 4-20 % SDS-PAGE gel and transferred onto nitrocellulose membrane. The mouse tissues included in the blot are adrenal, cerebellum, cerebrum, small intestine, skeletal muscle, stomach, testis, and thymus.</p> <p>Sample diagnosis: Normal</p> <p>Samples loaded: Lanes: 1: protein markers, 2: adrenal, 3: cerebellum, 4: cerebrum, 5: small intestine, 6: skeletal muscle, 7: stomach, 8: testis, and 9: thymus.</p> <p>Quantity loaded per lane: 15 µg</p> <p>Gel percentage: Gradient 4-20 %</p>
------------------	---

## Application Details

Application Notes:	<p>For Western Blot, the blot can be blocked with 1 % BSA or 5 % nonfat dry milk for 1 hour.</p> <p>Incubation takes 30 minutes to two hours with primary antibody, and 30 minutes to one hour with secondary antibody at room temperature.</p>
Restrictions:	For Research Use only

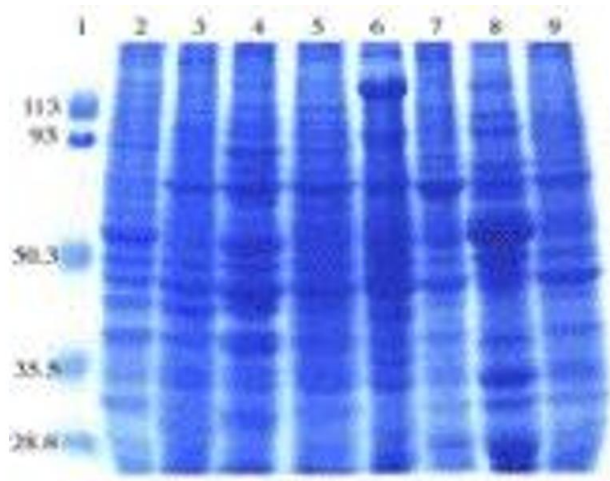
Handling

Handling Advice: The blot can be reused after stripping.

Storage: 4 °C

Storage Comment: Store at 4 °C.

Images



SDS-PAGE

Image 1.