

Datasheet for ABIN2457896
anti-SNAPC2 antibody



[Go to Product page](#)

1 Image

Overview

Quantity:	100 µL
Target:	SNAPC2
Reactivity:	Human
Host:	Rabbit
Clonality:	Polyclonal
Conjugate:	This SNAPC2 antibody is un-conjugated
Application:	Western Blotting (WB), ELISA

Product Details

Immunogen:	Antibody produced in rabbits immunized with a synthetic peptide corresponding a region of human SNAPC2.
Purification:	Antibody is purified by peptide affinity chromatography method.

Target Details

Target:	SNAPC2
Alternative Name:	SNAPC2 (SNAPC2 Products)
Background:	SNAPc is involved in transcription by two types of polymerases, it is required for transcription of both the RNA polymerase II and III small-nuclear RNA genes and binds specifically to the proximal sequence element PSE, a non-TATA-box basal promoter element common to these two types of genes. In addition, SNAPc is composed of at least three TAFs, SNAP43, SNAP45 and SNAP50.

Target Details

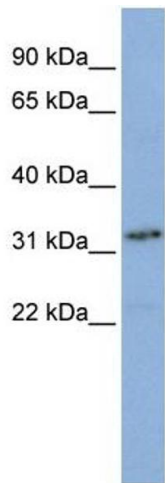
Molecular Weight:	35 kDa
Gene ID:	6618
NCBI Accession:	NP_003074
UniProt:	Q13487
Pathways:	Chromatin Binding

Application Details

Application Notes:	SNAPC2 antibody can be used for detection of SNAPC2 by ELISA at 1:1562500. SNAPC2 antibody can be used for detection of SNAPC2 by western blot at 1 µg/mL, and HRP conjugated secondary antibody should be diluted 1:50,000 - 100,000.
Restrictions:	For Research Use only

Handling

Format:	Lyophilized
Reconstitution:	Add 50 µL of distilled water. Final antibody concentration is 1 mg/mL.
Concentration:	1 mg/mL
Buffer:	Antibody is lyophilized in PBS buffer with 2 % sucrose.
Handling Advice:	As with any antibody avoid repeat freeze-thaw cycles.
Storage:	4 °C/-20 °C
Storage Comment:	For short periods of storage (days) store at 4 °C. For longer periods of storage, store SNAPC2 antibody at -20 °C.



Western Blotting

Image 1.