

Datasheet for ABIN2457941

anti-POU1F1 antibody[Go to Product page](#)**1** Image

Overview

Quantity:	100 µL
Target:	POU1F1
Reactivity:	Human, Dog
Host:	Rabbit
Clonality:	Polyclonal
Conjugate:	This POU1F1 antibody is un-conjugated
Application:	Western Blotting (WB), ELISA

Product Details

Immunogen:	Antibody produced in rabbits immunized with a synthetic peptide corresponding a region of human POU1F1.
Purification:	Antibody is purified by peptide affinity chromatography method.

Target Details

Target:	POU1F1
Alternative Name:	POU1F1 (POU1F1 Products)
Background:	PIT1 is a pituitary-specific transcription factor responsible for pituitary development and hormone expression in mammals and is a member of the POU family of transcription factors that regulate mammalian development. The POU family is so named because the first 3 members identified were PIT1 and OCT1 of mammals, and Unc-86 of C. elegans. PIT1 contains 2 protein domains, termed POU-specific and POU-homeo, which are both necessary for high

Target Details

affinity DNA binding on genes encoding growth hormone and prolactin. PIT1 is also important for regulation of the genes encoding prolactin and thyroid-stimulating hormone beta subunit by thyrotropin-releasing hormone and cyclic AMP. This gene encodes a member of the POU family of transcription factors that regulate mammalian development. The protein regulates expression of several genes involved in pituitary development and hormone expression. Mutations in this genes result in combined pituitary hormone deficiency. Multiple transcript variants encoding different isoforms have been found for this gene.

Molecular Weight: 33 kDa

Gene ID: 5449

NCBI Accession: [NP_000297](#)

UniProt: [P28069](#)

Pathways: [Regulation of Carbohydrate Metabolic Process](#)

Application Details

Application Notes: POU1F1 antibody can be used for detection of POU1F1 by ELISA at 1:312500. POU1F1 antibody can be used for detection of POU1F1 by western blot at 1 µg/mL, and HRP conjugated secondary antibody should be diluted 1:50,000 - 100,000.

Restrictions: For Research Use only

Handling

Format: Lyophilized

Reconstitution: Add 50 µL of distilled water. Final antibody concentration is 1 mg/mL.

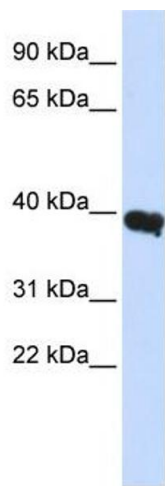
Concentration: 1 mg/mL

Buffer: Antibody is lyophilized in PBS buffer with 2 % sucrose.

Handling Advice: As with any antibody avoid repeat freeze-thaw cycles.

Storage: 4 °C/-20 °C

Storage Comment: For short periods of storage (days) store at 4 °C. For longer periods of storage, store POU1F1 antibody at -20 °C.



Western Blotting

Image 1.