

Datasheet for ABIN2457949

anti-SIX Homeobox 1 antibody[Go to Product page](#)**1** Image

Overview

| | |
|--------------|---|
| Quantity: | 100 µL |
| Target: | SIX Homeobox 1 (SIX1) |
| Reactivity: | Human, Mouse, Rat |
| Host: | Rabbit |
| Clonality: | Polyclonal |
| Conjugate: | This SIX Homeobox 1 antibody is un-conjugated |
| Application: | Western Blotting (WB), ELISA |

Product Details

| | |
|---------------|---|
| Immunogen: | Antibody produced in rabbits immunized with a synthetic peptide corresponding a region of human SIX1. |
| Purification: | Antibody is purified by peptide affinity chromatography method. |

Target Details

| | |
|-------------------|---|
| Target: | SIX Homeobox 1 (SIX1) |
| Alternative Name: | SIX1 (SIX1 Products) |
| Background: | SIX1 is a homeobox protein that is similar to the Drosophila 'sine oculis' gene product. This gene is found in a cluster of related genes on chromosome 14 and is thought to be involved in limb development. Defects in this gene are a cause of autosomal dominant deafness type 23 (DFNA23) and branchiootic syndrome type 3 (BOS3). The protein encoded by this gene is a homeobox protein that is similar to the Drosophila 'sine oculis' gene product. This gene is found |

Target Details

in a cluster of related genes on chromosome 14 and is thought to be involved in limb development. Defects in this gene are a cause of autosomal dominant deafness type 23 (DFNA23) and branchiootic syndrome type 3 (BOS3). Sequence Note: This RefSeq record was created from transcript and genomic sequence data because no single transcript was available for the full length of the gene. The extent of this transcript is supported by transcript alignments. Publication Note: This RefSeq record includes a subset of the publications that are available for this gene. Please see the Entrez Gene record to access additional publications.

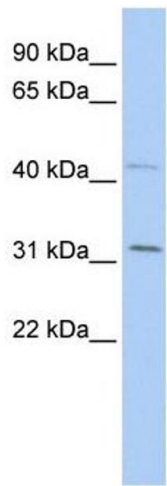
| | |
|-------------------|--|
| Molecular Weight: | 32 kDa |
| Gene ID: | 6495 |
| NCBI Accession: | NP_005973 |
| UniProt: | Q15475 |
| Pathways: | Sensory Perception of Sound , Regulation of Muscle Cell Differentiation , Tube Formation , Skeletal Muscle Fiber Development |

Application Details

| | |
|--------------------|--|
| Application Notes: | SIX1 antibody can be used for detection of SIX1 by ELISA at 1:1562500. SIX1 antibody can be used for detection of SIX1 by western blot at 1 µg/mL, and HRP conjugated secondary antibody should be diluted 1:50,000 - 100,000. |
| Restrictions: | For Research Use only |

Handling

| | |
|------------------|--|
| Format: | Lyophilized |
| Reconstitution: | Add 50 µL of distilled water. Final antibody concentration is 1 mg/mL. |
| Concentration: | 1 mg/mL |
| Buffer: | Antibody is lyophilized in PBS buffer with 2 % sucrose. |
| Handling Advice: | As with any antibody avoid repeat freeze-thaw cycles. |
| Storage: | 4 °C/-20 °C |
| Storage Comment: | For short periods of storage (days) store at 4 °C. For longer periods of storage, store SIX1 antibody at -20 °C. |



Western Blotting

Image 1.